

2024

Senior Housing Design

Trends





We're excited to share our fourth edition of the Design Trend E-Book, which has been carefully curated by our award-winning team of senior housing designers, construction and technology professionals.

This year we will draw inspiration from nature with earthy colors and biophilic design elements. And, we're increasingly seeing innovative ways in which technology and design are integrating to support safety and staff efficiency. Explore all 8 trends:

Nature-Inspired Color Palette of the Year

page 4

Art Deco Inspired Trends

page 5

Environmental Initiatives

page 6

Biophilic Design

page 7

Robotics in the Dining Room

page 8

Technology Advancements for Safety and Wander Management

page 9

New Seating for Increased Marketability

page 10

Cohort and Intergenerational Living

page 11

Trend 1

Nature-Inspired Colors for 2024

In the vibrant landscape of interior design for 2024, we find ourselves immersed in an earthy, nature-inspired color palette that's set to redefine the way we perceive and experience healthcare and senior living spaces. This harmonious palette is a celebration of the natural world's beauty, drawing inspiration from the very elements that shape our environment. Earth tones, such as terra-cotta, take center stage, bringing a warm and grounded feel to interiors. The rich, burnt-orange hues evoke the rugged terrain of desert landscapes, creating a sense of connection with Earth itself.



As we delve deeper into this palette, we encounter the enchanting world of forestcore-inspired selections. Here, a deep, lush green dominates, offering a glimpse into the heart of lush woodlands. This color exudes tranquility and invokes a sense of renewal, making it a perfect choice for those seeking to create a restful and rejuvenating atmosphere.

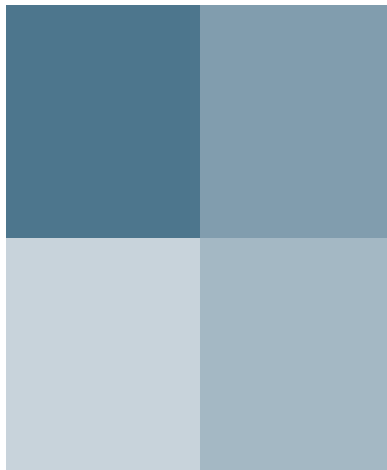


Adding a refreshing contrast to the mix are the coastal-inspired blues. From serene, light pastels that mirror the calmness of cascading ocean waves to bold teals that evoke the depths of the sea, these coastal blues infuse a sense of serenity and expansiveness that brings the essence of the coastline inside.

Trend 1

Spring Lake, the Direct Supply® Aptura® 2024 Color of the Year, is a neutral blue grey hue that encapsulates the magic of a rich twilight sky. This soothing, midtone blue color gets its inspiration from the mesmerizing colors that grace the horizon as the sun sets and the night sky takes over. It's a timeless yet bold choice, striking a balance between traditional and modern design sensibilities.

What sets Spring Lake apart is its remarkable versatility. It's a color carefully crafted to seamlessly integrate into a wide range of design styles. Whether you choose to employ it as a captivating accent wall or to envelop an entire space in its enchanting embrace, it offers endless possibilities. It particularly finds a natural home in moody, whimsigoth aesthetics, where it can infuse spaces with an otherworldly allure. Whether you're seeking a touch of sophistication or a daring dash of adventure, Spring Lake effortlessly adapts to your design vision, making it the ideal choice for those looking to transform a healthcare space.



Trend 2

Art Deco Inspired Decor

We find ourselves in the midst of a design renaissance where the nostalgic charm of art deco decor is making a significant comeback. This revival of retro aesthetics is breathing new life into our living spaces, blending the best elements of that iconic era with contemporary design sensibilities. The art deco, with its bold and unapologetic approach to interior design, is leaving an indelible mark on our spaces, creating a sense of familiarity while adding a fresh, modern twist. The art deco revival is known for its quiet luxury, which is portrayed through dark accent colors, gold metals, geometric prints, exaggerated curves, earthy warm colors, natural wood tones and plush fabrics.



“Art Deco’s use of geometric shapes, symmetrical patterns, metallic colors, and luxurious natural materials make it an extremely versatile style that can blend seamlessly with regional aesthetics. The fact that it draws from cultures around the world makes it a highly adaptable design style for many communities across the United States.”

Rebecca K., Senior Lead Interior Designer, Direct Supply Aptura



One of the standout elements of art deco decor making a triumphant return is the use of earthy warm colors and natural wood tones. These hues are being cleverly integrated into contemporary interiors to infuse a sense of subtle luxury. Additionally, geometric patterns and bold prints are finding their way back into our homes, adorning everything from furniture to wall art.



Trend 2

Art Deco Inspired Decor [CONTINUED]

When it comes to furniture, the art deco influence is apparent in the resurgence of curved and plush pieces. Circular sofas, swivel chairs, and velvet upholstery are making a stylish comeback, embracing both the comfort and the iconic aesthetics of the era. As an example, you might find a modern living room boasting a sleek, curved sofa in a vibrant art deco-inspired terra-cotta red color, complemented by bold, geometric patterns in the form of throw pillows or wall decor.



Another notable revival is the use of metallic accents, particularly in the form of brass and gold finishes. These luxurious elements add a touch of opulence and glamor to any space.

Trend 3

Environmental Initiatives



The senior living industry is making significant progress in aligning with the healthcare sector by embracing sustainable initiatives such as SEQUAL. This move is instrumental in creating healthier, more nurturing, and environmentally responsible spaces. These initiatives have the potential to transform lives and elevate the standard of care and living for everyone.

Environmental footprint is now a crucial factor in decision-making for renovation or new construction designs, given the increasing availability of sustainable alternatives. As the senior living sector embraces sustainable initiatives like SEAQUAL, it's helping to create healthier, more nurturing, and environmentally responsible spaces that have the potential to transform lives and elevate the standard of care and living for all.

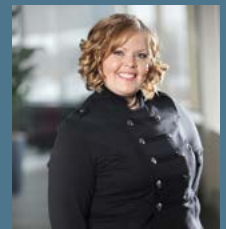
Trend 4

Biophilic Design



“Incorporating the essence of nature into senior living spaces through biophilic design not only transforms interiors aesthetically but also nurtures the well-being of both residents and staff. This can be accomplished with actual natural elements or through color, light, and texture. By seamlessly blending natural elements such as sunlight, greenery, and water into the environment, we create a sanctuary that promotes tranquility and healing.”

Jeanna S., Design Manager, Direct Supply Aptura



Biophilic design focuses on fostering a deep connection between human beings and the natural world, aiming to enhance well-being and health outcomes.

For healthcare and senior living environments, the incorporation of biophilic elements holds immense promise. The infusion of nature-inspired design can positively impact patient healing, reduce stress, and elevate the overall experience of residents and healthcare workers alike. Imagine a healthcare facility with an abundance of indoor plants, natural lighting, calming nature-inspired color palettes, mushroom-inspired patterns, wallpaper with plants and leaves, and other materials inspired by flora and fauna. This not only improves the aesthetic appeal of the space but also creates a healing atmosphere that can accelerate recovery and promote well-being.



Trend 4

Biophilic Design [CONTINUED]

The attention to detail in **Ruby Commons**, designed by Direct Supply Aptura, emphasizes the impact of crafting a meaningful living environment. This is evident in the thoughtfully designed hallways that honor local Milwaukee, Lake Geneva and northern Wisconsin landscapes. The Atrium, the center of the Ruby Commons community, has become a shining example of how biophilic design can change the ambiance of a room with its 26-foot high wall forest inspired mural and the thoughtful use of natural light.

“Aptura’s Senior Living design is more elevated than anything I’ve seen from competition. There is a thoughtful approach and an extra level of sophistication that I don’t see in other buildings I come across. It’s in all of the little details. I am constantly getting inquiries from residents, families, and staff asking if they can buy a specific piece of furniture or artwork from throughout the Senior Living facility- how often do you hear that in a Senior Living community?”

Amy S., Vice President of Real Estate Development, Capri Communities



Trend 5

Robotics in the Dining Room



“Automation and the appropriate usage of robotics can help senior living facilities overcome the challenges of staffing shortages, high turnover rates, and rising labor costs. By automating some of the dull, dangerous, or repetitive tasks that are currently completed by staff members, we can reduce operational costs and free up more time for staff to interact with residents.”

Justin S., Senior Manager, Innovation and Technology, Direct Supply

Artificial Intelligence (AI) and robotics are revolutionizing the way healthcare settings operate and provide patient-centered care. These technological advancements have introduced an array of positive impacts, making healthcare more efficient, effective, and patient-centric.

According to the U.S. Chamber of Commerce there are 10.5 million unfilled jobs in the U.S.; disproportionately hitting leisure and hospitality businesses, healthcare and Senior Living; showing little indication of any significant improvement in

2024. This leaves countless healthcare and senior living facilities asking one vital question: How can we make our current staff more productive instead of needing to hire more? AI-enabled robotics in the dining room is one way to ease this pain point. For example, Servi Plus, which can help covering large service areas, busy shifts, running food, bussing dishes, and other repetitive, predictable, and time-consuming tasks.

Trend 5

Robotics in the Dining Room [CONTINUED]

Additionally, the inclusion of robotics can streamline the delivery of supplies and medications, and enable smart room designs, where lighting, temperature, and even furniture can be adjusted to meet patient needs.

The ongoing advancements in AI and robotics continue to be a driving force behind the transformation of healthcare settings, ensuring that they are not only equipped with the latest technologies but also designed to provide the highest quality of care for all patients, especially in senior care locations, where personalized and efficient care is paramount.



Benefits of Servi Plus ✓

For Operators

- ✓ **Increase your staff's productivity:** staff can focus on residents and providing quality service instead of walking back and forth to the kitchen
- ✓ **Increase efficiency:** Servi Plus works all day, every day, seven days a week

For staff

- ✓ **Walk and lift less:** no more redundant trips to the kitchen, no more heavy trays
- ✓ **Provide better service:** spend more time with residents

For resident

- ✓ **Fresher food:** kitchen sends food as soon as it is ready, not after it's been waiting under a heat lamp
- ✓ **Receive better service:** wait staff stays in dining area, ready to help

Trend 6

Technology Advancements for Safety and Wander Management

Technology advancements have brought about a significant positive impact on interior design, especially in healthcare and senior care settings. These innovations have not only enhanced the safety and well-being of patients and residents but have also influenced the layout and design of these facilities.

New wander management systems incorporate motion sensors and geo-fencing technology to monitor the movement of individuals, particularly those with dementia or cognitive impairments. By alerting staff or caregivers when a patient or resident strays into restricted areas, wander management systems ensure their safety. This technology has transformed the design of these spaces, allowing for more open and inclusive layouts that accommodate the need for patient mobility while maintaining a secure environment.

Motion alerts are another key technological advancement that has positively impacted interior design. These alerts provide real-time information about the movement of patients and residents, enabling staff to respond promptly to any emergencies or deviations from daily routines. Interior designs in healthcare and senior care settings now include strategically placed motion sensors that blend seamlessly with the environment while providing essential safety features.



“Community designs for Senior Living should be flexible and adaptable to accommodate the changing technology trends and the evolving expectations of both residents and staff. Establishing a technology roadmap early on will allow both existing and new communities to build to this vision.”

Justin S., Senior Manager, Innovation and Technology, Direct Supply



Trend 7

New Seating to Increase Marketability



Direct Supply® Maxwell Thomas® BeyondWood™

Refreshing outdated furniture with stylish and functional senior living furnishings can help you attract prospective residents and their families. In addition to increasing marketability, new furniture can help elevate the everyday experience for your residents. We've curated a list of new seating designed for senior living environments that are sure to make an impression in 2024.

"BeyondWood™ chairs have great support. They are easy for the geriatric population to get out of, and the casters on the front make sliding them under the table easy. I can't talk enough about the durability of these chairs; they will be here for the long haul without any scrapes or dings on the leg."

Tara B., Owner and Administrator at
Countryside Health & Rehab of
Newton County



Trend 7

New Seating to Increase Marketability

[CONTINUED]



Maxwell Thomas®
Deronda Lounge Chair

The new **Maxwell Thomas® BeyondWood™** composite dining chairs are the most durable in the Maxwell Thomas dining portfolio, combining strength and comfort for Senior Living Residents. The design and construction of these chairs create a homelike feel without sacrificing the benefits of commercial-grade seating. This chair bridges the natural, inviting feel residents and patients expect with the durability needed for a high-use environment.

The **Samuelson Sound Chair** offers elegant simplicity and clean lines. This chair is an innovative fusion of comfort and technology for seniors, with a fully capable Bluetooth speaker. The design is both sleek and ergonomic, providing maximum comfort and support while facilitating easy access to the audio controls, making it an ideal choice for those seeking relaxation and entertainment.

The **Bernhardt Hospitality Alannis Chair** offers a timeless and sophisticated design tailored to senior care settings. With its high-quality construction and graceful silhouette, this chair exudes elegance and is well-suited for creating refined seating areas. Its supportive design and classic aesthetic ensure a comfortable and welcoming addition to any spaces.

The **Deronda Lounge Chair** is beautifully designed. It's tailored metal frame and rich, faux-wood finish make it simple yet sleek. This chair is made for long-lasting good looks and dependable use, even in high traffic areas.



Samuelson
Sound Chair

The **Direct Supply® Maxwell Thomas® BeyondWood™ Salthill Dining Chair** is a classic dining chair with a dark wood frame and a light-colored upholstered seat and backrest.



Direct Supply® Maxwell
Thomas® BeyondWood™
Salthill Dining Chair



Bernhardt
Hospitality
Alannis Chair

Trend 8

Cohort and intergenerational living

Cohort and intergenerational living arrangements between seniors, college students and even child care centers are not new, however they are becoming more popular due to their remarkable ability to support seniors' desire for both independence and engagement.

For seniors, such arrangements present an opportunity to redefine their perception of themselves and their roles within the community. These environments foster a sense of vitality and purpose, as seniors become mentors and caregivers. They engage with college students or connect with the innocence and joy of babies, imparting a sense of wisdom and forming meaningful bonds. Furthermore, local artists and musicians, performing groups and creative instructors can bring meaningful engagement opportunities to the community.



“How do you imagine your life when you’re 85? What will bring purpose and joy to your days? Evidence from research helps us understand the impact that intentional intergenerational living experiences have on improving a seniors’ quality of life. As humans, we are wired for connection with others. Creating communities where we can learn with each other, support each other, and value each other’s unique contributions lifts the quality of our lives in immeasurable way”

Liz J., PhD, MSN - Clinical Director, Direct Supply



Over 60% of seniors express a strong desire to remain in the communities they currently call home, and approximately 60% favor an intergenerational setting. It aligns with their vision of a balanced lifestyle, one that encompasses independence and sociability, thereby promoting their overall well-being. For adult family caregivers, the assurance of their loved ones' health, safety, and protection remains paramount. These intergenerational arrangements offer peace of mind, as there's a strong sense of community care and support.

60%
of seniors



want to remain in the communities they call home & favor an intergenerational setting

<https://www.directsupply.com/insights/senior-housing-results/contact/>

Trend 8

Cohort and intergenerational living [CONTINUED]

For existing spaces, consider how you might refresh underutilized rooms to better foster community engagement. Inviting local groups to participate in events or setting up an activity space to double as a community meeting room can create an intergenerational bridge that engages residents and families with the greater local community.

Whether you're considering building a new space or repurposing an existing one, intergenerational spaces offer numerous benefits. They support seniors' wishes for independence and meaningful relationships. Simultaneously, these spaces align with adult family caregivers' priorities. These include ensuring the health, safety, and protection of their loved ones. Furthermore, they help seniors remain valued members of an engaging community.





Start implementing these trends in your buildings today.
Schedule a free consultation at DirectSupply.com/Impressions.