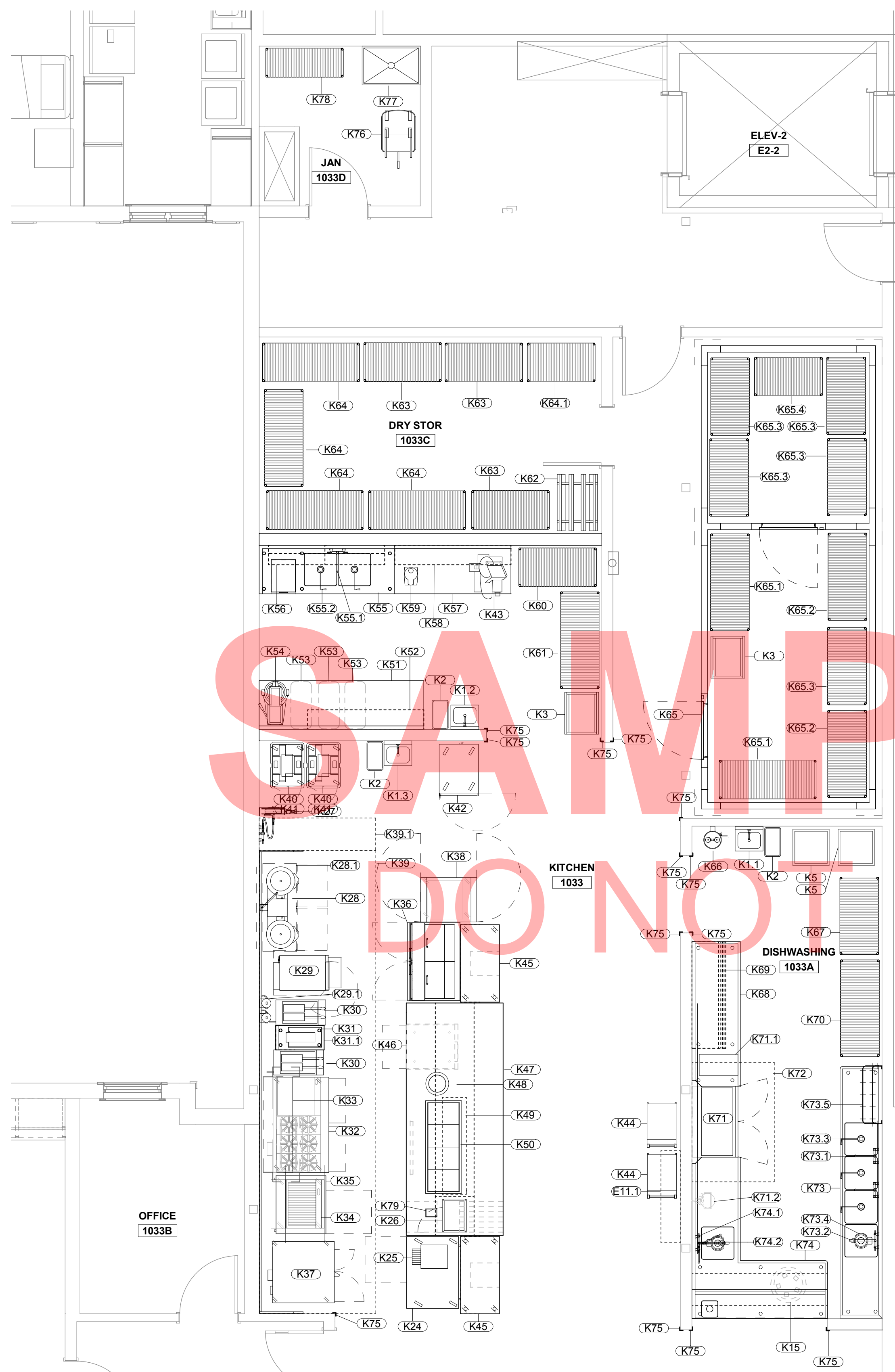
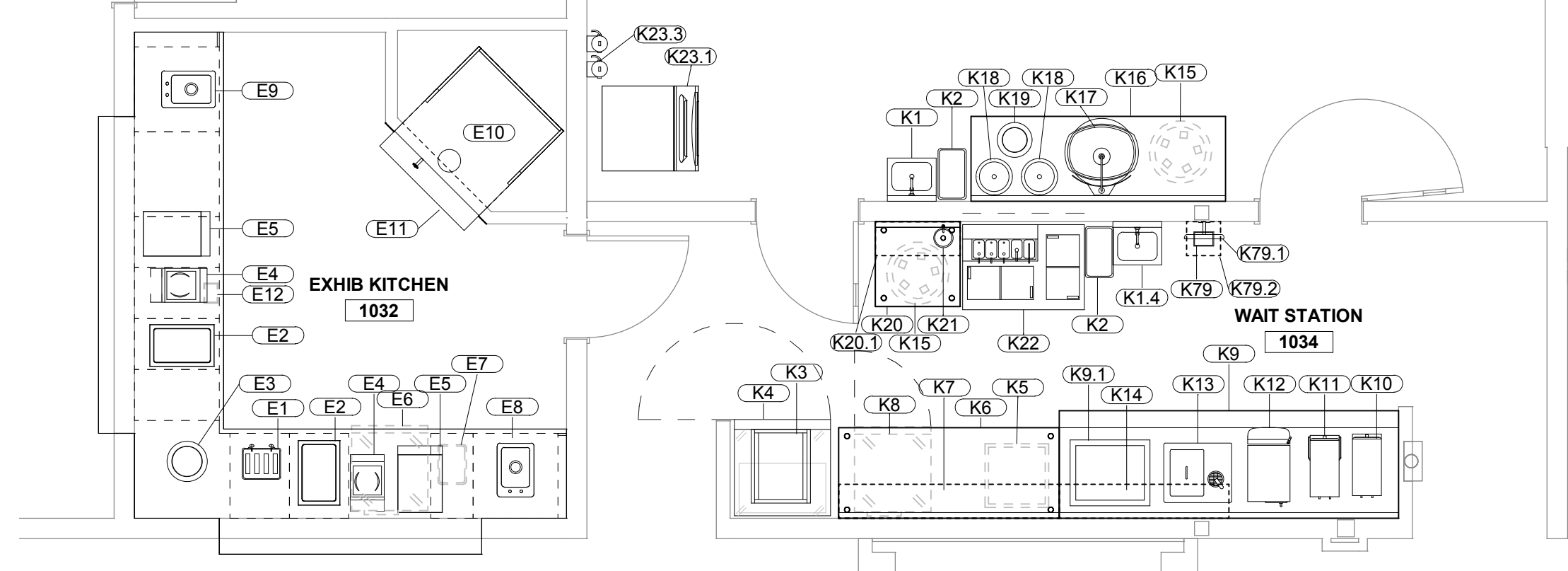


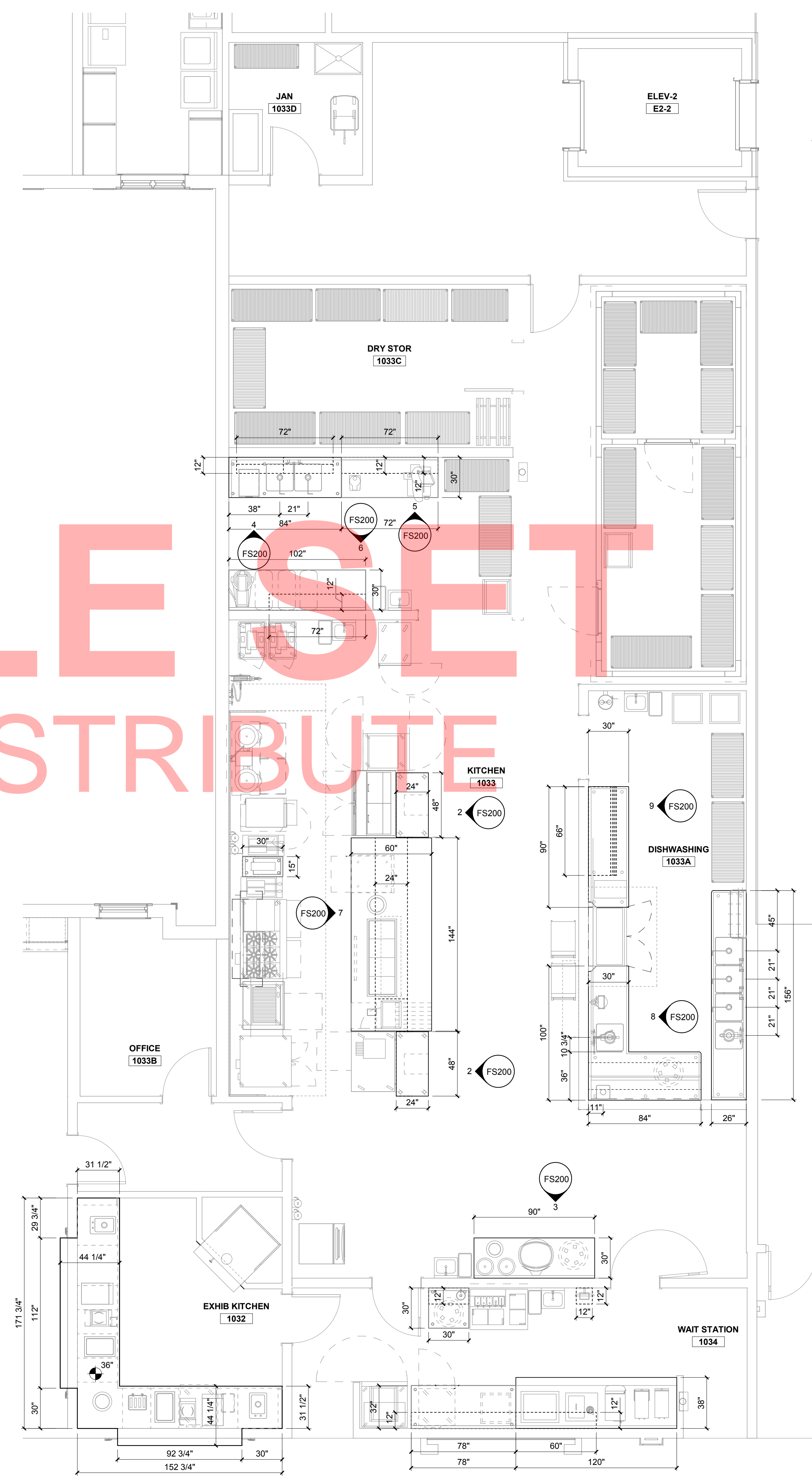
EQUIPMENT LEGEND - 1033 KITCHEN			
ITEM NO	QTY	EQUIPMENT CATEGORY	EQUIPMENT REMARKS
K1	1	HAND SINK	
K1.1	1	HAND SINK	
K1.2	1	HAND SINK	
K1.3	1	HAND SINK	
K1.4	1	HAND SINK, WALL MOUNT	
K2	5	TRASH CAN	
K3	3	PAN RACK	
K4	1	REFRIGERATOR, ROLL-IN	
K5	3	DOLLY, DISHRACK	
K6	1	WORK TABLE, W/SHELF	
K7	1	SHELF, WALL MOUNTED	
K8	1	REFRIGERATOR, UNDERCOUNTER, COMPACT	
K9	1	BEVERAGE STATION	
K9.1	1	DISPENSER, TRAY AND RACK	
K10	1	COFFEE BREWER	BY OWNER
K11	1	TEA BREWER	
K12	1	JUICE DISPENSER	
K13	1	WATER & ICE STATION, DROP-IN	
K14	1	SHELF, WALL MOUNTED	
K15	3	TRASH CAN, MOBILE	
K16	1	WORK TABLE	
K17	1	DECORATIVE CARVING STATION	
K18	2	SOUP WELL, DROP-IN	
K19	1	HEATED DISH DISPENSER, DROP-IN	
K20	1	WORK TABLE, W/SHELF	
K20.1	1	SHELF, WALL MOUNTED	
K21	1	DIPPERWELL ASSEMBLY	
K22	1	ICE CREAM DIPPING CABINET	
K23	1	ICE MAKER	
K23.1	1	ICE BIN, 570 LB.	
K23.3	1	WATER TREATMENT SYSTEM	
K24	1	REFRIGERATOR, DEEP UNDERCOUNTER, DRAWERED	
K25	1	TOASTER, CONVEYOR	
K26	1	OVEN, MICROWAVE	
K27	1	HOSE REEL ASSEMBLY	
K28	1	KETTLE, STEAM JACKETED	
K28.1	1	STAND, EQUIPMENT	
K29	1	CONVECTION STEAMER	
K29.1	1	WATER TREATMENT SYSTEM	
K30	2	FRYER, DEEP FAT, GAS	
K31	1	PORTABLE FOODWARMERS	
K31.1	1	WORK TABLE, W/SHELF	
K32	1	RANGE, RESTAURANT, GAS	W/CONVECTION OVEN
K33	1	SALAMANDER BROILER, GAS	
K34	1	CHARBROILER, GAS	
K35	1	REFRIGERATOR, EQUIPMENT STAND	
K36	1	REFRIGERATOR, SANDWICH/SALAD PREP	
K37	1	CONVECTION OVEN, GAS, DOUBLE	
K38	1	REFRIGERATOR, PASS-THRU	
K39	1	EXHAUST HOOD	
K39.1	1	FIRE SUPPRESSION CABINET	
K40	2	DOLLY, CATERING EQUIPMENT	
K41	2	CARRIER, FOOD	
K42	1	NON-INSULATED DELUXE PROOF/HOT CABINET	
K43	1	SLICER, FOOD	
K44	2	CART, UTILITY	
K45	2	WORK TABLE, MOBILE	
K46	1	FREEZER, UNDERCOUNTER, DRAWERS	
K47	1	CHEF'S TABLE	
K48	1	DROP-IN PLATE DISPENSER, HEATED	
K49	1	FOOD WARMER	
K50	1	HOT WELLS, DROP-IN	
K51	1	PREP TABLE	
K52	1	SHELF, WALL MOUNTED	
K53	3	BIN, INGREDIENT	
K54	1	MIXER, COUNTER	
K55	1	PREP SINK	
K55.1	1	FAUCET, WALL MOUNT	
K55.2	2	WASTE WASTE VALVE	
K56	1	WALL MOUNTED PANPOT RACK	
K57	1	PREP TABLE	
K58	1	SHELF, WALL MOUNTED	
K59	1	FOOD PROCESSOR	
K60	1	SHELVING, WIRE, MOBILE	
K61	1	SHELVING, WIRE, MOBILE	
K62	1	RACK, CAN	
K63	3	SHELVING, WIRE, MOBILE	
K64	4	SHELVING, WIRE, MOBILE	
K64.1	1	SHELVING, WIRE, MOBILE	
K65	1	WALK IN COOLER/FREEZER	
K65.1	2	SHELVING, WIRE, MOBILE	
K65.2	2	SHELVING, WIRE, MOBILE	
K65.3	5	SHELVING, WIRE, MOBILE	
K65.4	1	SHELVING, WIRE, MOBILE	
K66	1	EMERGENCY EYEWASH	
K67	1	SHELVING, WIRE, MOBILE	
K68	1	CLEAN DISH TABLE	
K69	1	DISH RACK, SLANTED, WALL MOUNTED	
K70	1	SHELVING, WIRE, MOBILE	
K71	1	WAREWASHER, RACK CONVEYOR	
K71.1	1	BOOSTER HEATER	
K71.2	1	WATER TREATMENT SYSTEM	BY OWNER
K72	1	CONDENSATE HOOD	
K73	1	UTENSIL SINK	
K73.1	2	FAUCET, POT FILLER, WALL MOUNT	
K73.2	1	PRE-RINSE FAUCET, WALL MOUNT	
K73.3	3	WASTE WASTE VALVE	
K73.4	1	DISPOSER, GARBAGE	
K73.5	1	POT RACK, WALL MOUNT	
K74	1	DISH TABLE, SOILED	
K74.1	1	PRE-RINSE FAUCET, WALL MOUNT	
K74.2	1	DISPOSER, GARBAGE	
K75	13	CORNER GUARD, L-SHAPED	
K76	1	MOP BUCKET	
K77	1	MOP SINK & FAUCET	
K78	1	SHELVING, WIRE, MOBILE	
K79	2	POS PRINTER	BY OWNER
K79.1	1	POS MONITOR	BY OWNER
K79.2	1	POS SHELF, WALL MOUNTED	



EQUIPMENT LEGEND - 1032 EXHIBITION KITCHEN			
ITEM NO	QTY	EQUIPMENT CATEGORY	EQUIPMENT REMARKS
E1	1	TOASTER, SLOT-TYPE	
E2	2	DROP-IN COLD PAN	
E3	1	DROP-IN PLATE DISPENSER, HEATED	
E4	2	INDUCTION RANGE, COUNTERTOP	
E5	2	HEATED GLASS SHELF	
E6	1	REFRIGERATOR, UNDERCOUNTER, COMPACT	
E7	1	TRASH CAN	
E8	1	HAND SINK & FAUCET, DROP-IN	
E9	1	DUMP SINK & FAUCET, DROP-IN	
E10	1	PIZZA OVEN	
E11	1	EXHAUST HOOD	
E11.1	1	FIRE SUPPRESSION CABINET	
E12	1	POS PRINTER	BY OWNER



1 1033 KITCHEN/1032 EXHIBITION KITCHEN EQUIPMENT PLAN  
SCALE: 1/4" = 1'-0"



2 1033 KITCHEN/1032 EXHIBITION KITCHEN ANNOTATION PLAN  
SCALE: 1/4" = 1'-0"

SAMPLE SET  
DO NOT DISTRIBUTE

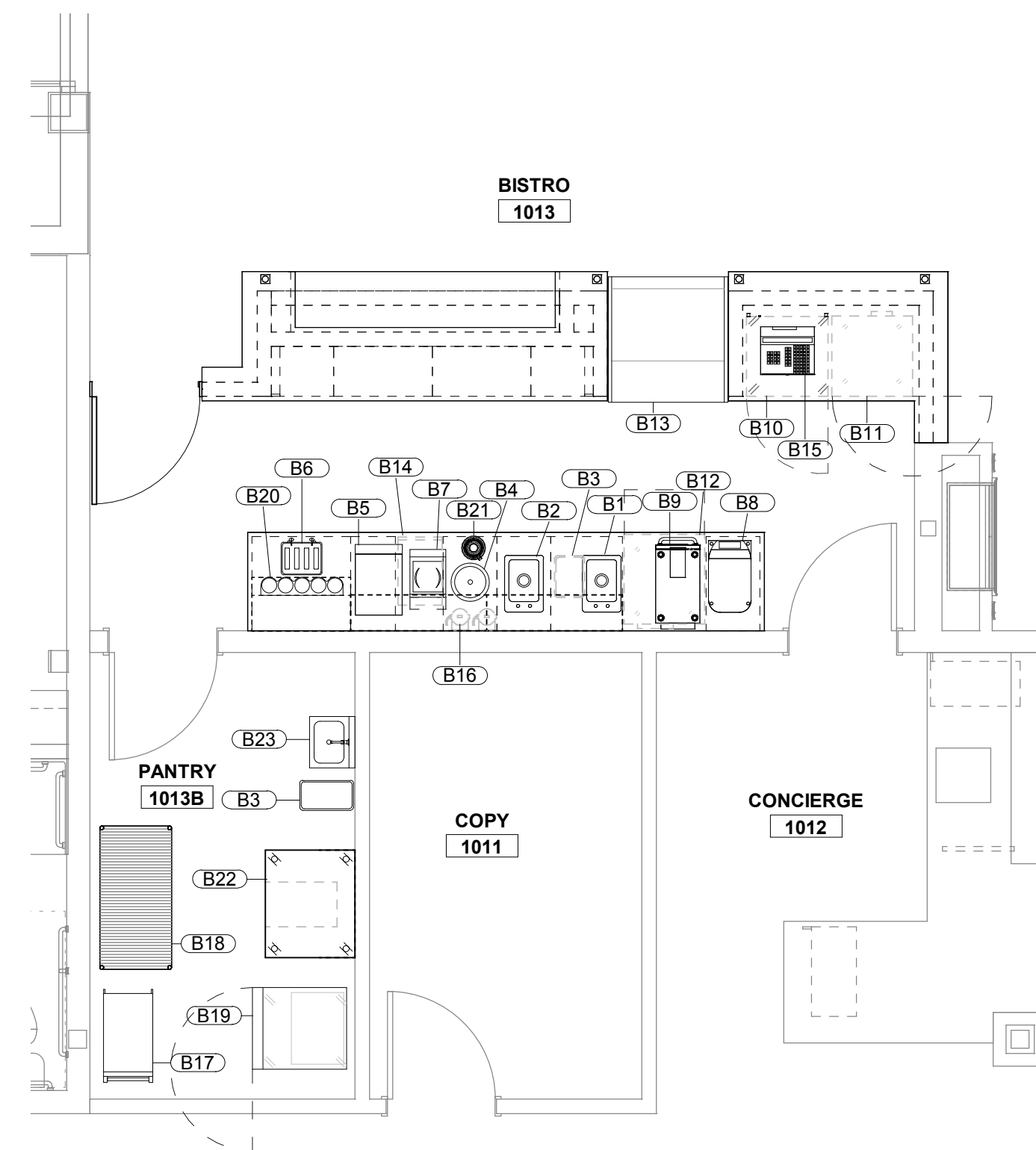
SAMPLE SET

REVISIONS	

PROJECT STATUS:  
DATE ISSUED:  
DRAWN BY:  
CHECKED BY:  
PROJECT#:

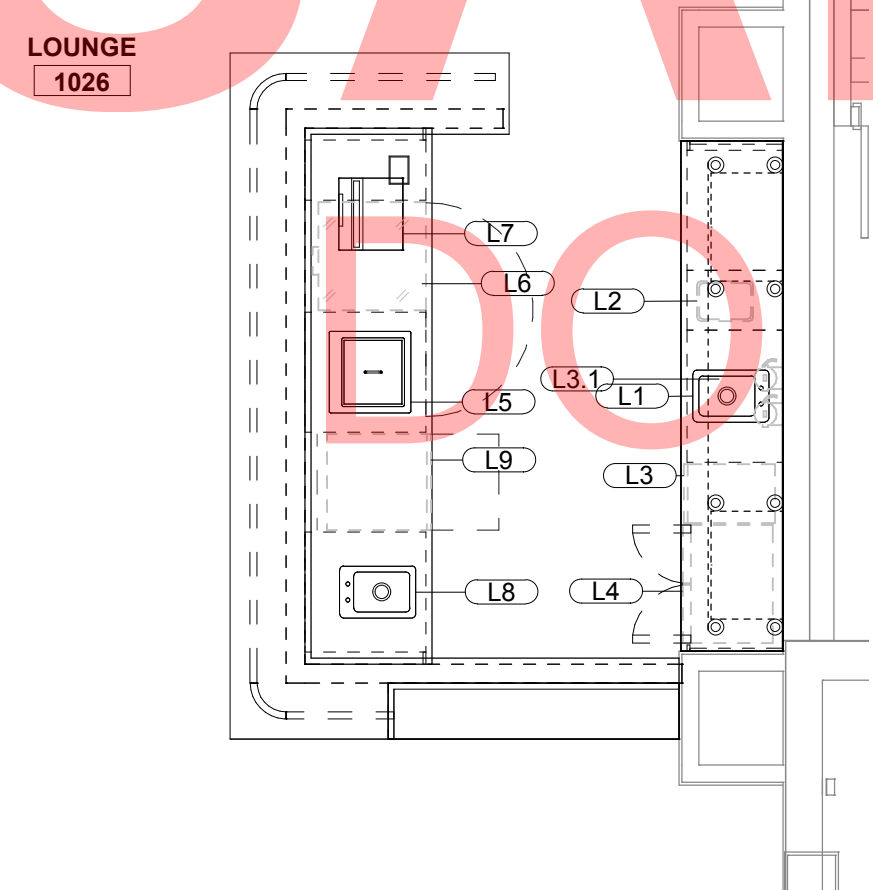
EQUIP PLANS

EQUIPMENT LEGEND - 1013 BISTRO			
ITEM NO	QTY	EQUIPMENT CATEGORY	EQUIPMENT REMARKS
B1	1	HAND SINK & FAUCET, DROP-IN	
B2	1	DUMP SINK & FAUCET, DROP-IN	
B3	2	TRASH CAN	BY OWNER
B4	1	SOUP WELL, DROP-IN	
B5	1	HEATED GLASS SHELF	
B6	1	TOASTER, SLOT-TYPE	
B7	1	INDUCTION RANGE, COUNTERTOP	
B8	1	SPRINET COFFEE MAKER	BY OWNER
B9	1	OVEN, RAPID COOK & MICROWAVE	W/PANINI KIT
B10	1	UNDERCOUNTER FREEZER	
B11	1	REFRIGERATOR, UNDERCOUNTER, COMPACT	
B12	1	REFRIGERATOR, UNDERCOUNTER	
B13	1	REFRIGERATED SELF-SERVICE CASE	
B14	1	ICE MAKER, UNDERCOUNTER	
B15	1	POS	BY OWNER
B16	1	WATER TREATMENT SYSTEM	
B17	1	CART, BUSSING, ENCLOSED	
B18	1	SHELVING, WIRE, MOBILE	
B19	1	REFRIGERATOR/FREEZER, DUAL TEMP	
B20	1	CANDY DISPENSER, WALL MOUNT, 5 CYLINDER	
B21	1	BLENDER, BEVERAGE	
B22	1	WORK TABLE, MOBILE	
B23	1	HAND SINK	



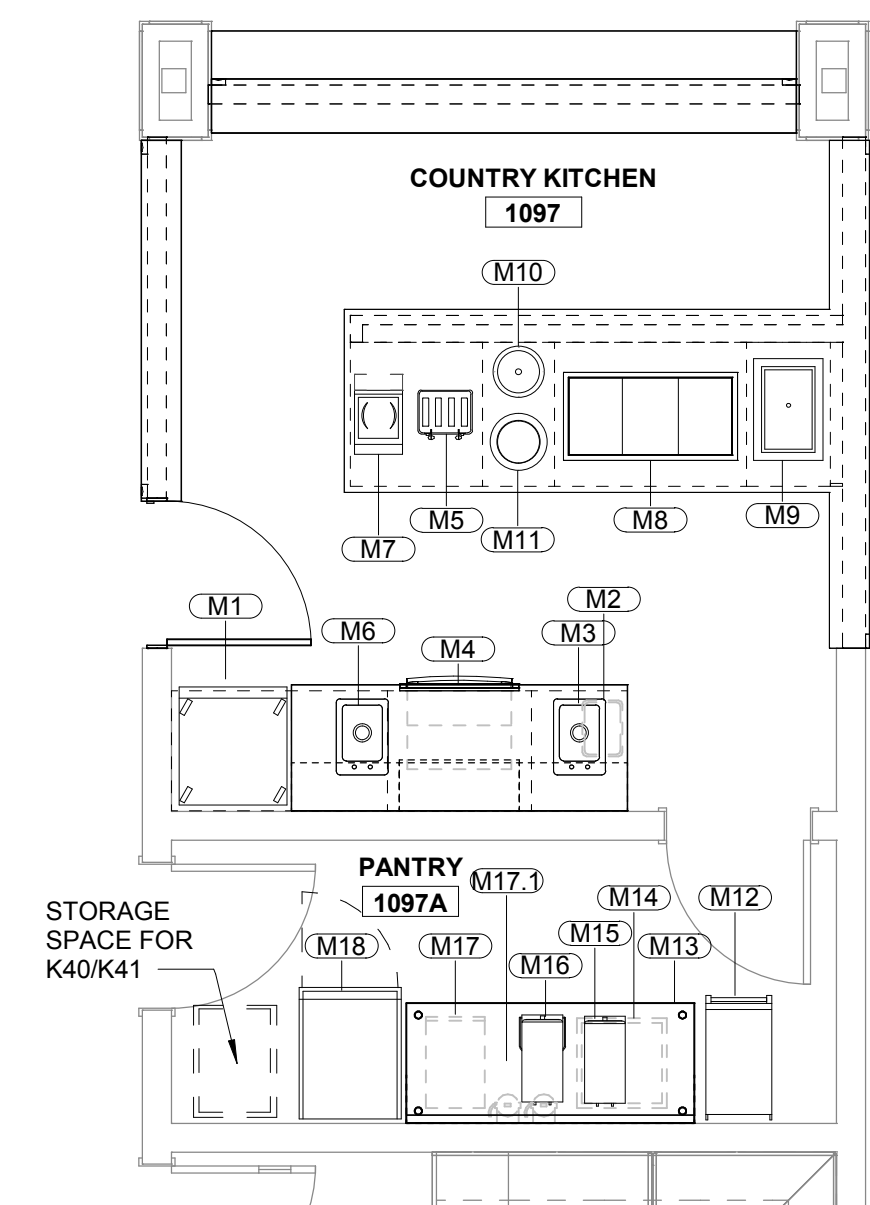
1 1013 BISTRO EQUIPMENT PLAN  
SCALE: 1/4" = 1'-0"

EQUIPMENT LEGEND - 1026 LOUNGE			
ITEM NO	QTY	EQUIPMENT CATEGORY	EQUIPMENT REMARKS
L1	1	HAND SINK & FAUCET, DROP-IN	
L2	1	TRASH CAN	BY OWNER
L3	1	ICE MAKER, UNDERCOUNTER	
L3.1	1	WATER TREATMENT SYSTEM	
L4	1	REFRIGERATOR, BEVERAGE, UNDERCOUNTER	
L5	1	ICE BIN, DROP IN	
L6	1	REFRIGERATOR, UNDERCOUNTER, COMPACT	
L7	1	POS	BY OWNER - REQUIRES POWER AND DATA
L8	1	DUMP SINK & FAUCET, DROP-IN	
L9	1	DISHWASHER, UNDERCOUNTER	BY OWNER
L10	1	POS PRINTER	BY OWNER - REQUIRES POWER AND DATA



2 1026 LOUNGE EQUIPMENT PLAN  
SCALE: 1/4" = 1'-0"

EQUIPMENT LEGEND - 1097 COUNTRY KITCHEN			
ITEM NO	QTY	EQUIPMENT CATEGORY	EQUIPMENT REMARKS
M1	1	REFRIGERATOR/FREEZER, DUAL TEMP	
M2	1	TRASH CAN	BY OWNER
M3	1	HAND SINK & FAUCET, DROP-IN	
M4	1	WALL OVEN, BUILT-IN	
M5	1	TOASTER, SLOT-TYPE	
M6	1	DUMP SINK & FAUCET, DROP-IN	
M7	1	INDUCTION RANGE, COUNTERTOP	
M8	1	DROP-IN HOT WELLS	
M9	1	COLD PAN, DROP-IN, ICE-COOLED	
M10	1	DROP-IN SOUP WELL	
M11	1	DROP-IN PLATE DISPENSER, HEATED	
M12	1	CART, BUSSING, ENCLOSED	
M13	1	WORK TABLE, W/SHELF	
M14	1	DOLLY, DISHRACK	
M15	1	COFFEE BREWER	BY OWNER
M16	1	TEA BREWER	BY OWNER
M17	1	ICE MAKER, UNDERCOUNTER	
M17.1	1	WATER TREATMENT SYSTEM	
M18	1	REFRIGERATOR, REACH-IN	



3 1097 COUNTRY KITCHEN EQUIPMENT PLAN  
SCALE: 1/4" = 1'-0"

**SAMPLE SET**  
**DO NOT DISTRIBUTE**

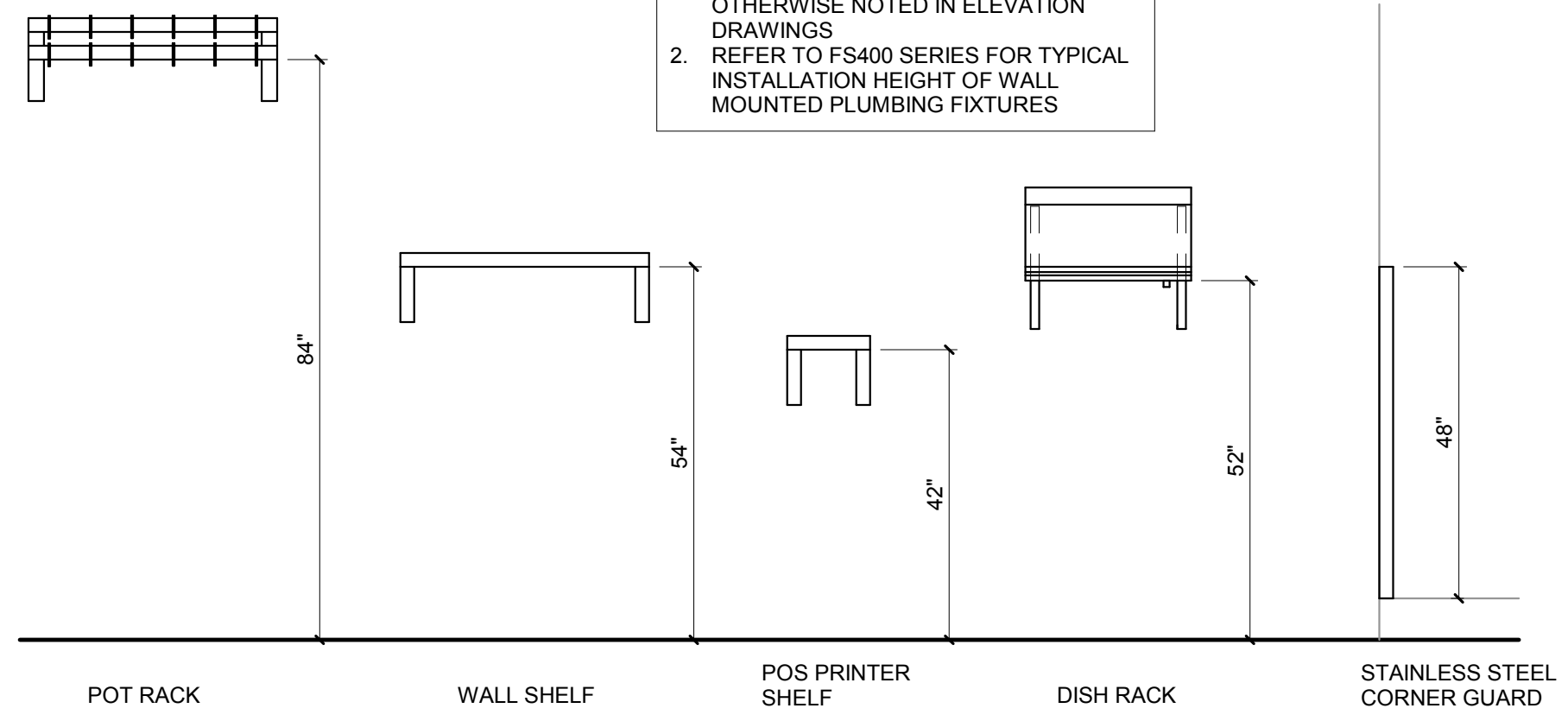
**SAMPLE SET**

REVISIONS

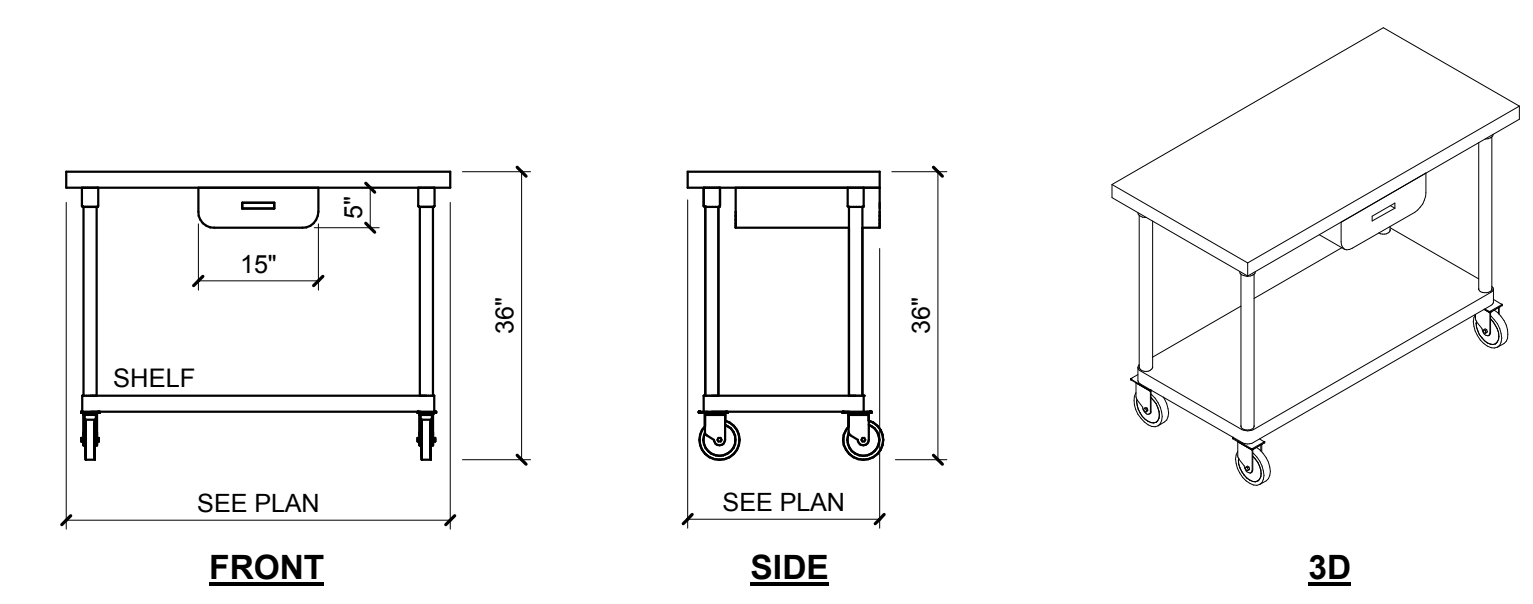

PROJECT STATUS:  
DATE ISSUED:  
DRAWN BY:  
CHECKED BY:  
PROJECT#

EQUIP PLANS

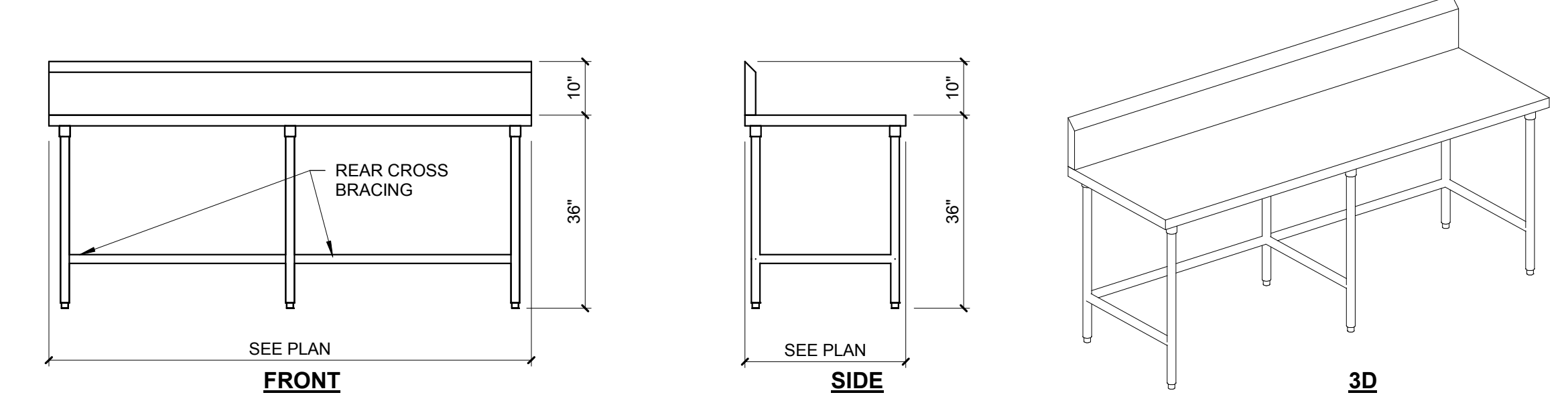

**NOTE:**  
1. INSTALLATION HEIGHTS ARE TYPICAL AT ALL OCCURRENCES UNLESS OTHERWISE NOTED IN ELEVATION DRAWINGS  
2. REFER TO FS400 SERIES FOR TYPICAL INSTALLATION HEIGHT OF WALL MOUNTED PLUMBING FIXTURES



**1** TYPICAL INSTALLATION HEIGHTS  
SCALE: 1/2" = 1'-0"

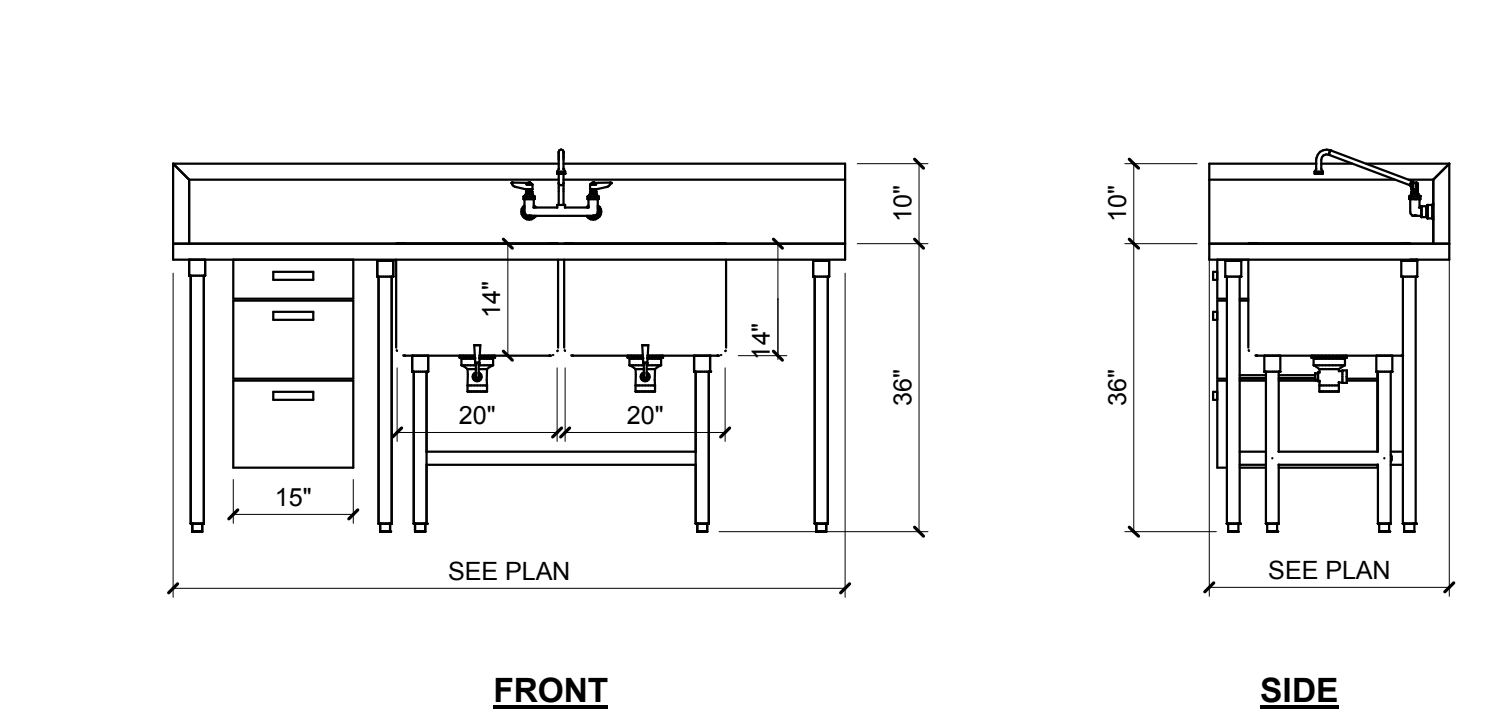


**2** K45  
SCALE: 1/2" = 1'-0"

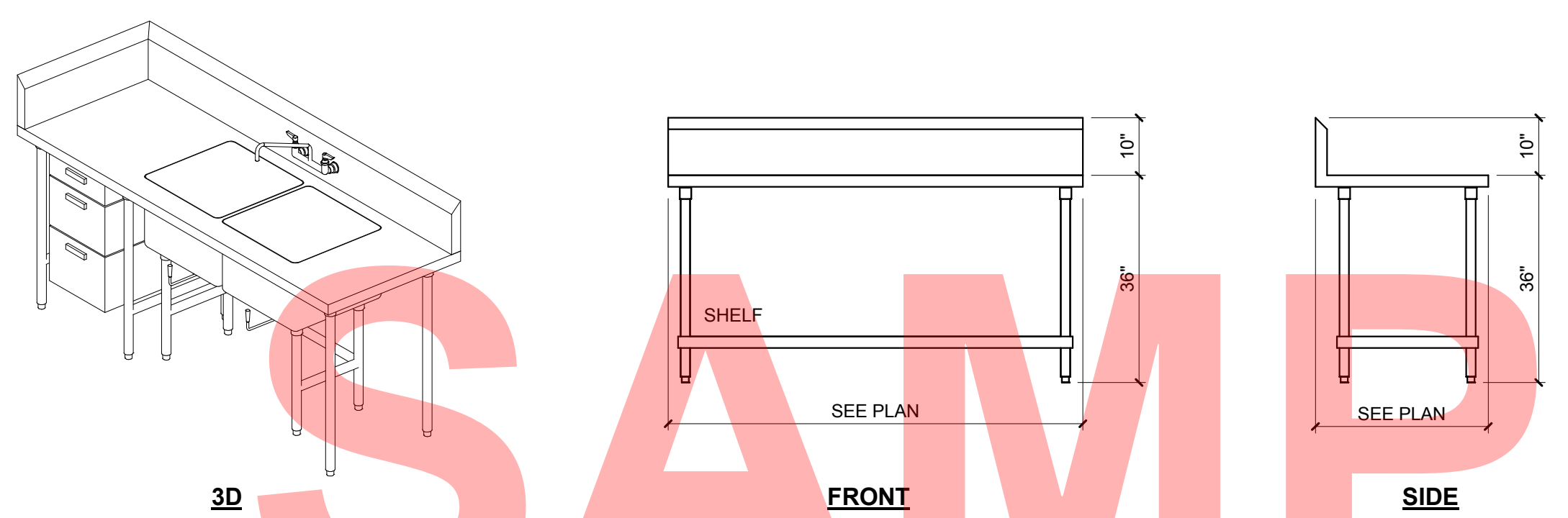


**3** K16  
SCALE: 1/2" = 1'-0"

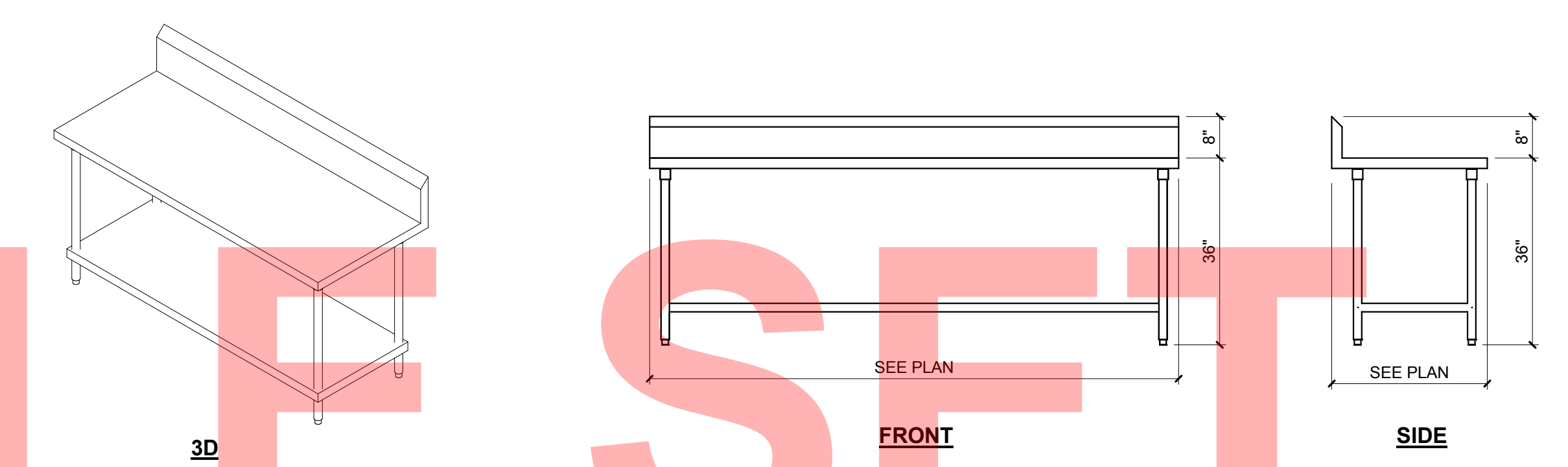
**CUSTOM STAINLESS STEEL GENERAL NOTES**  
1. COORDINATE WITH EQUIPMENT PLANS FOR ALL DROP-IN EQUIPMENT



**4** K55  
SCALE: 1/2" = 1'-0"

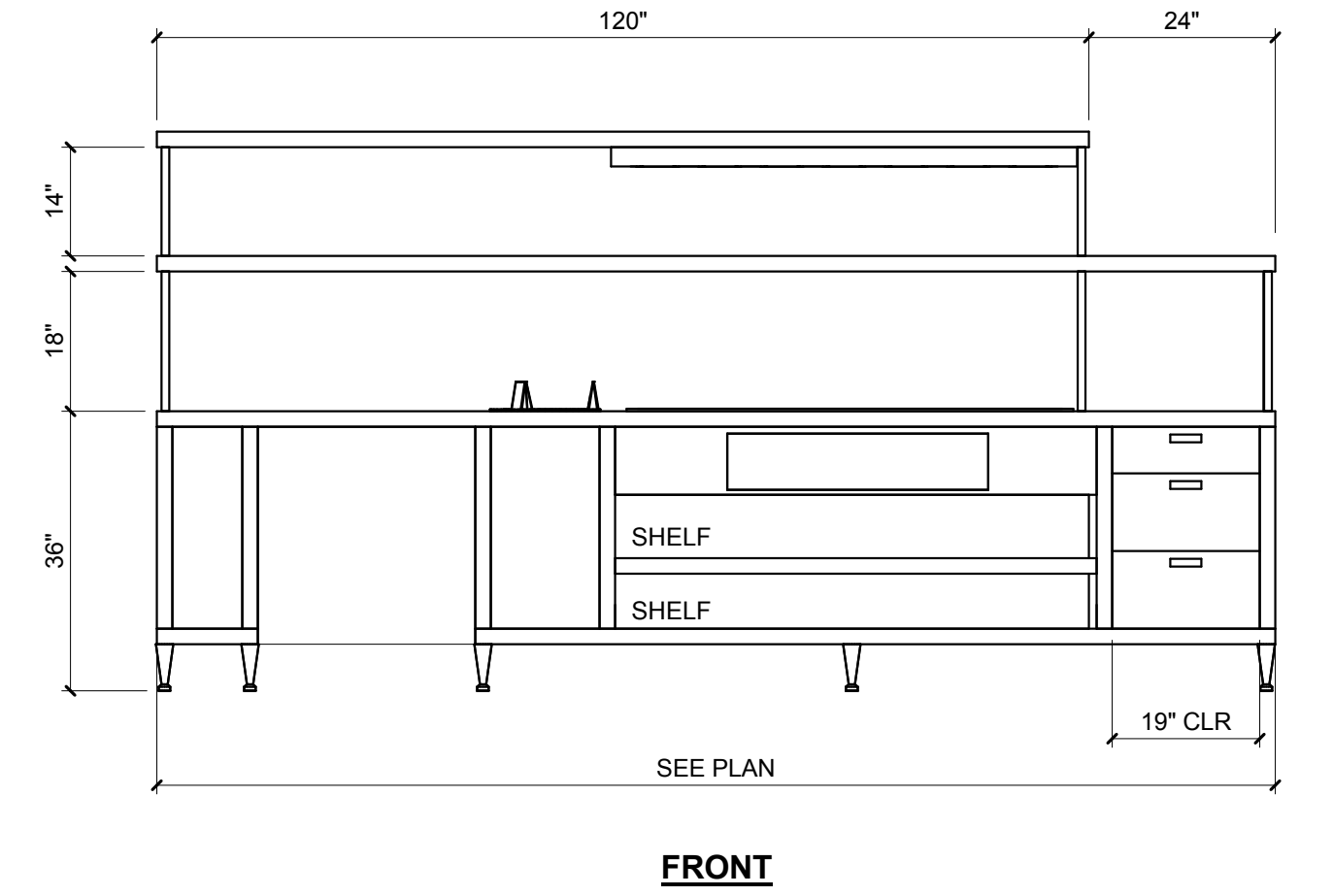


**5** K57  
SCALE: 1/2" = 1'-0"

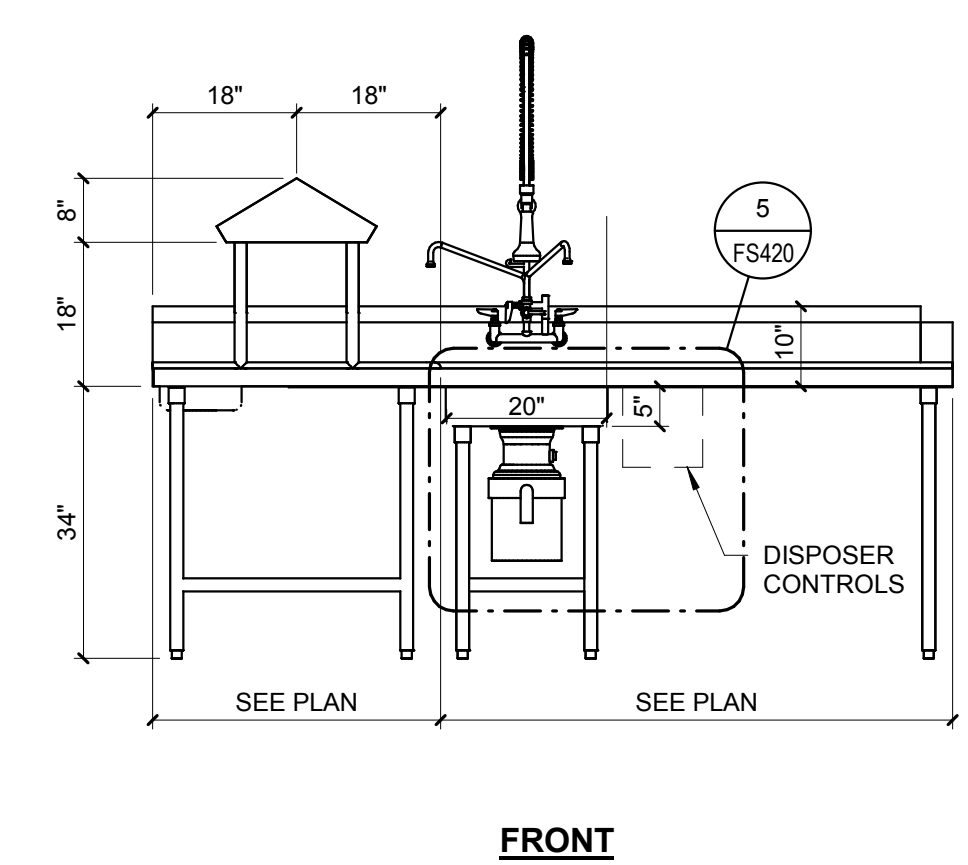
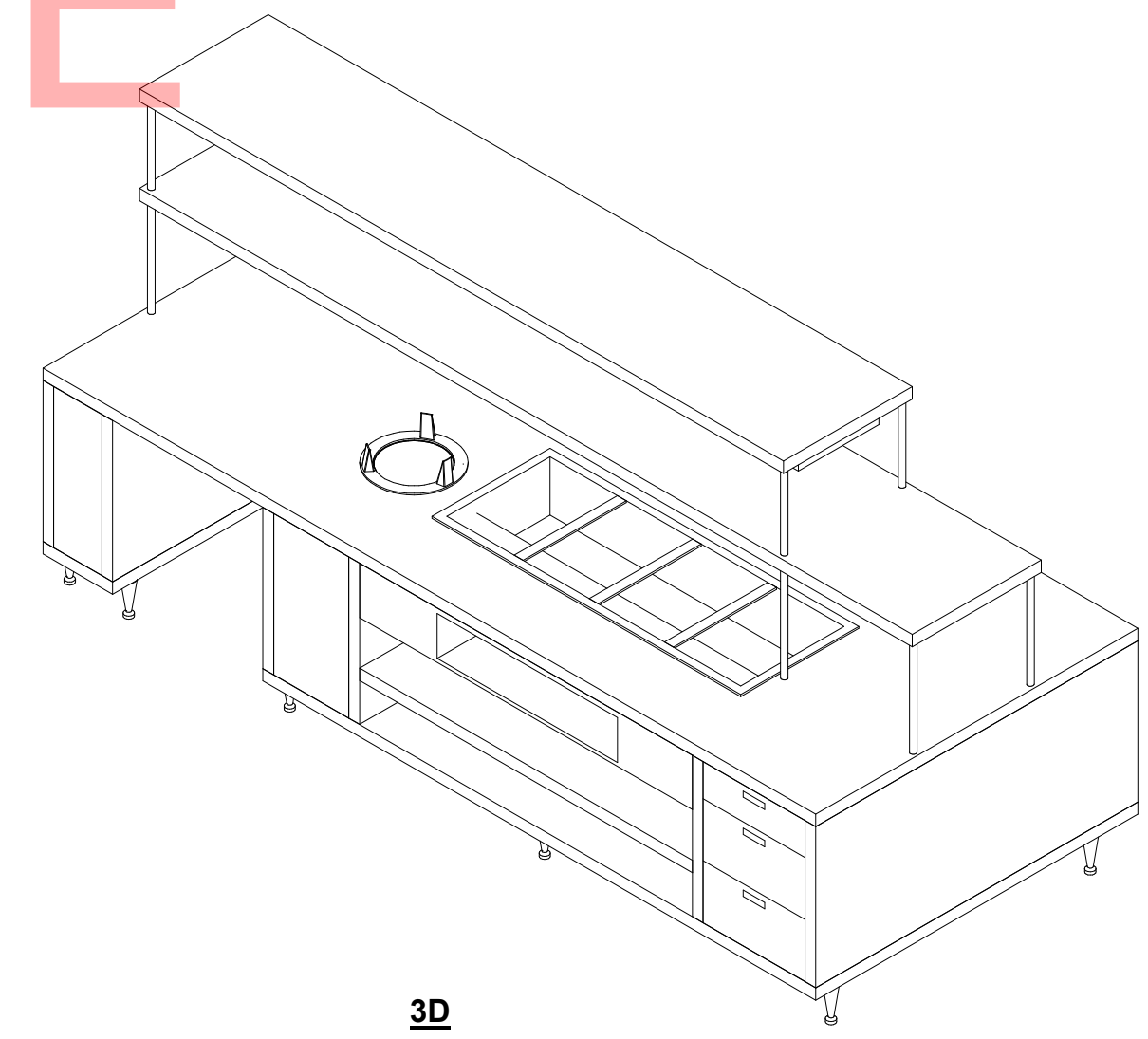
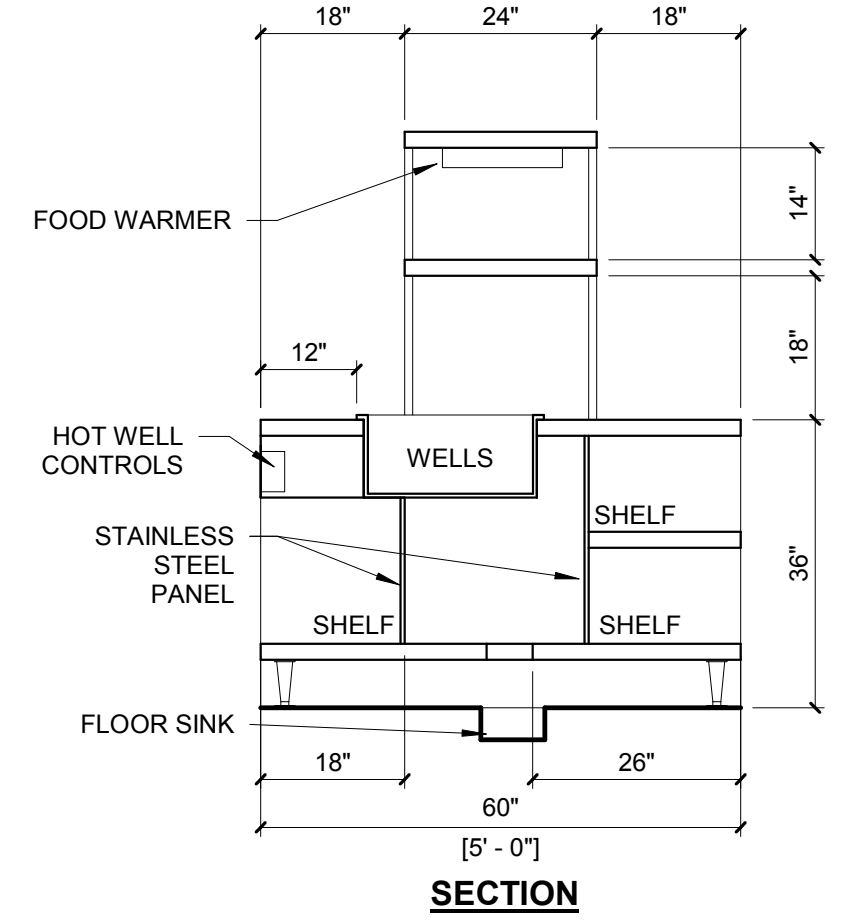
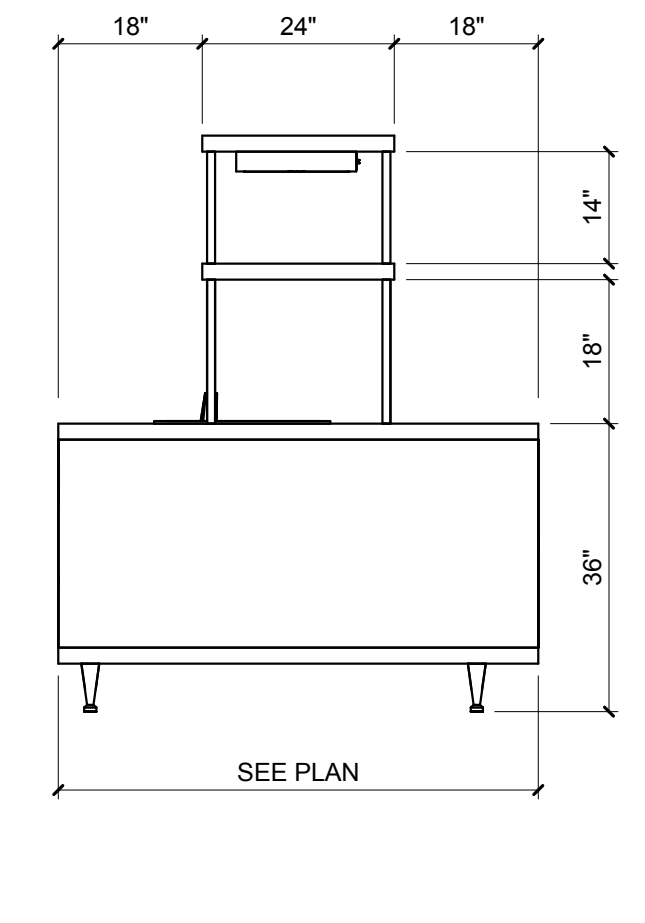
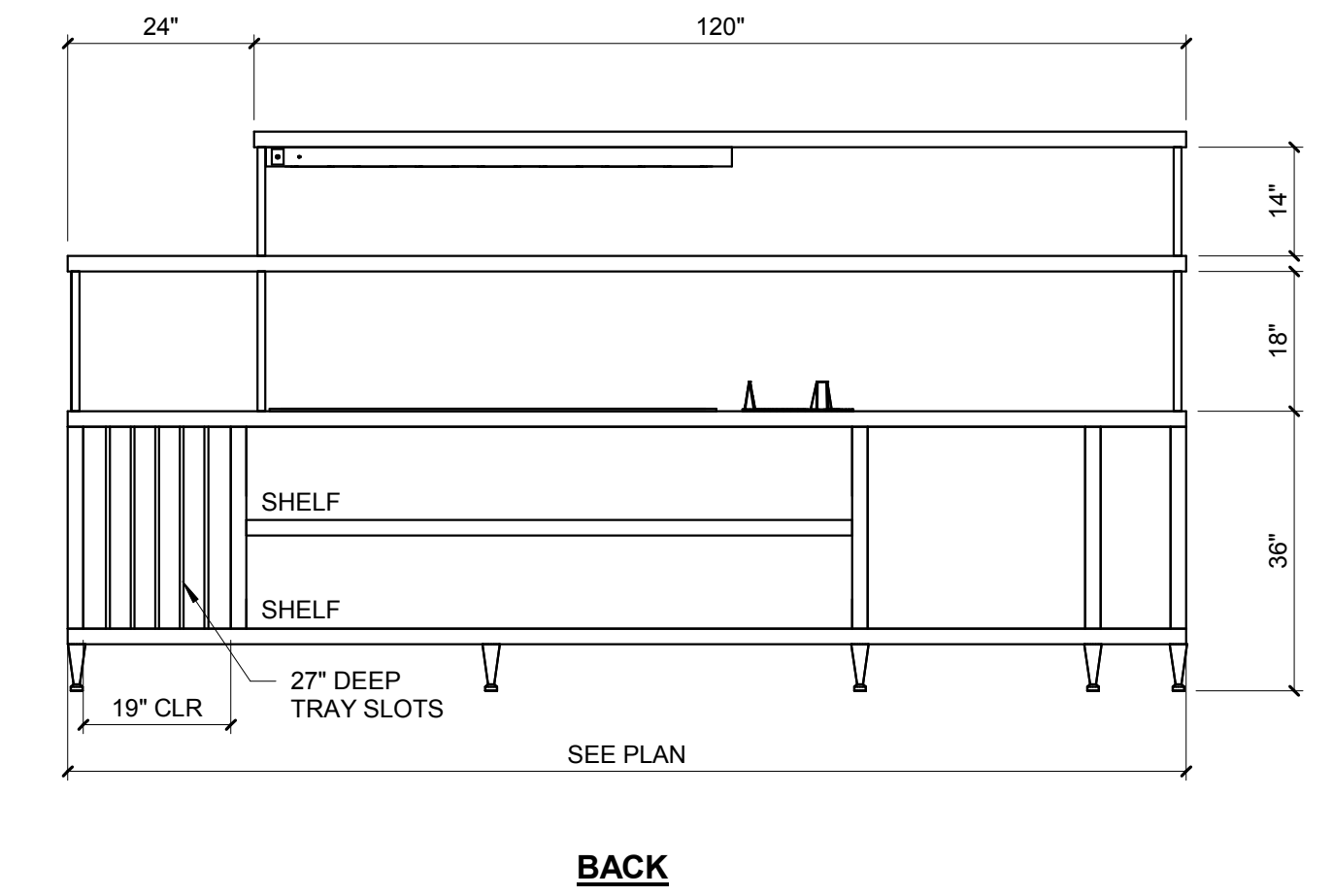
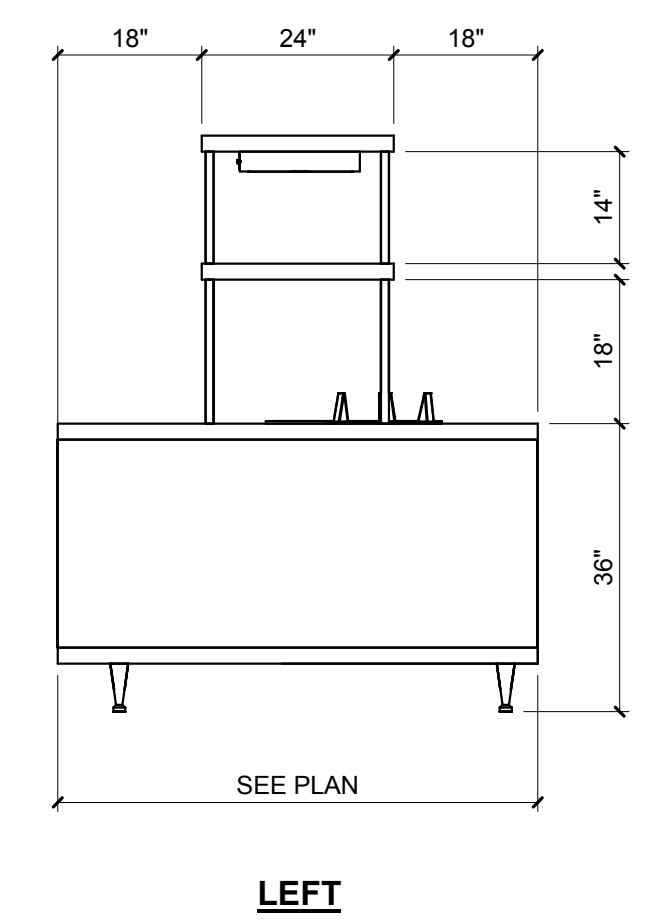


**6** K51  
SCALE: 1/2" = 1'-0"

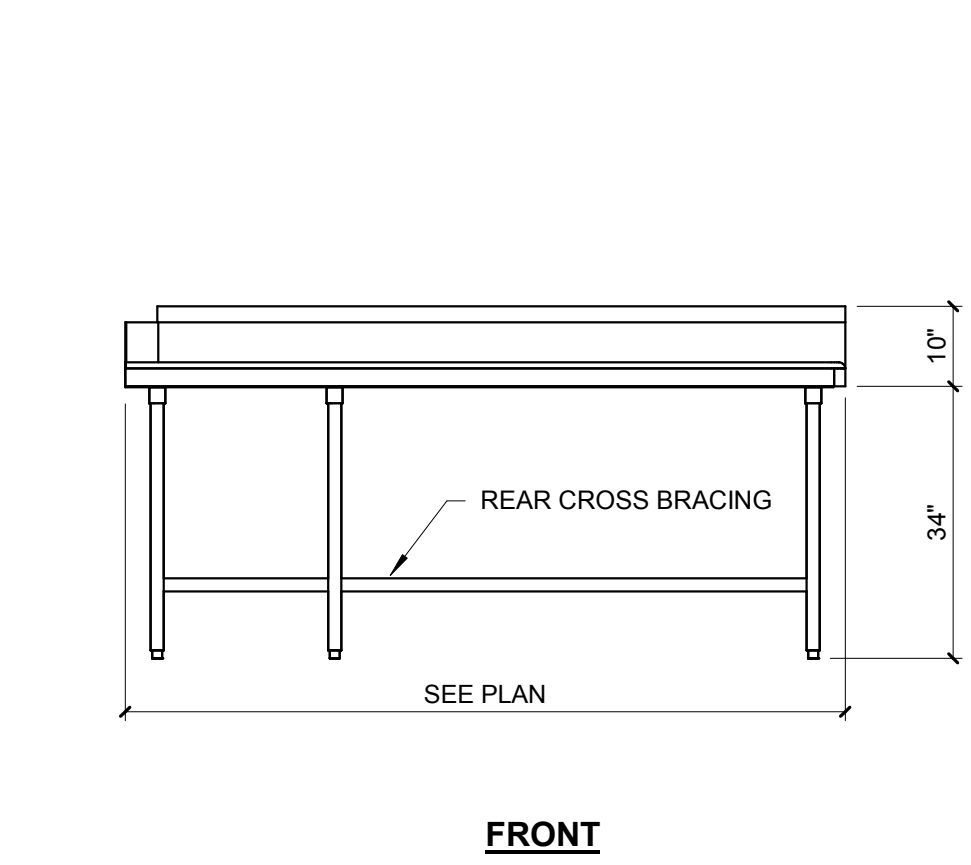
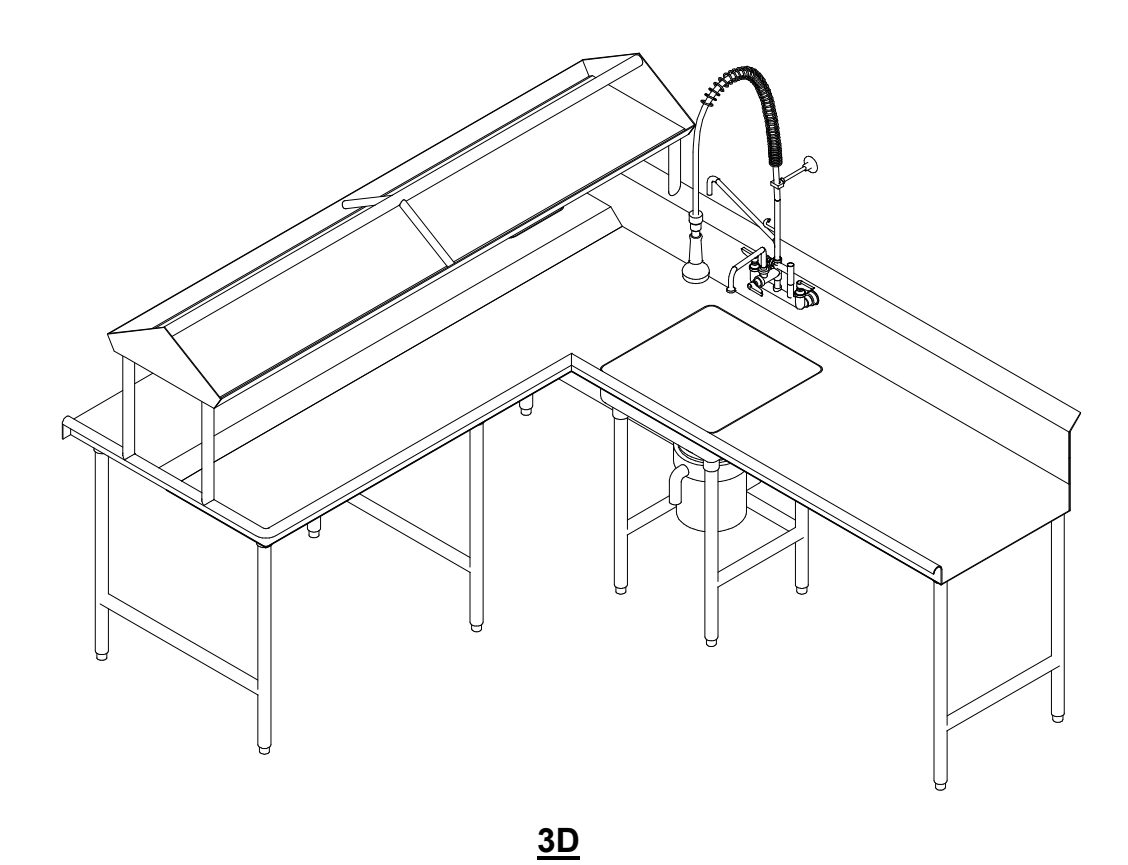
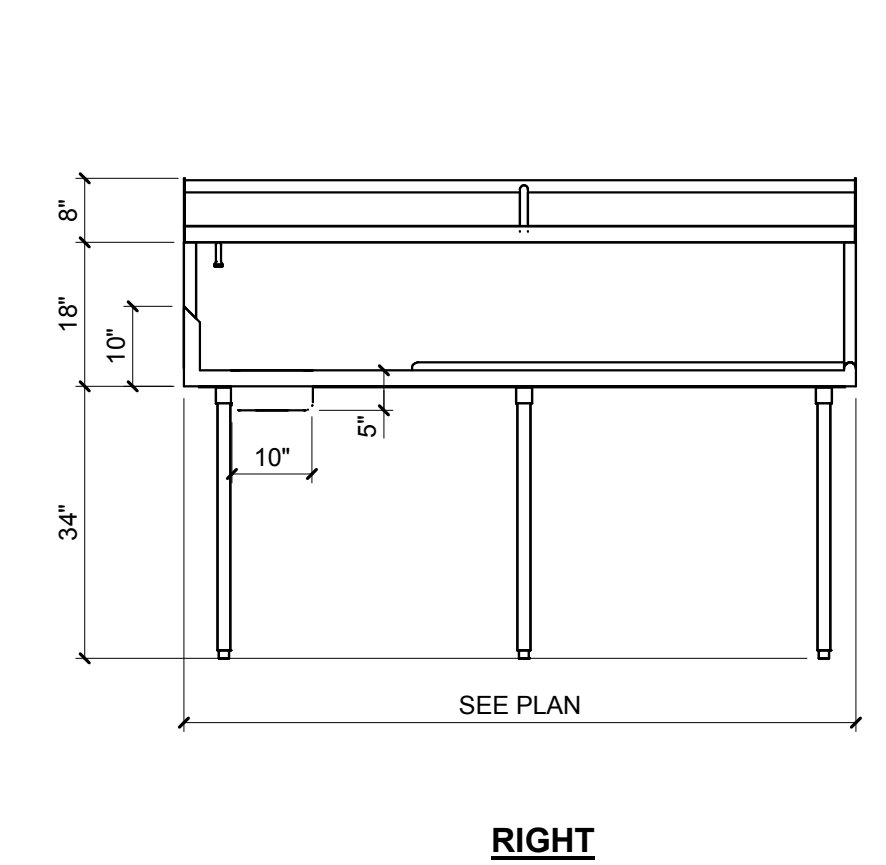
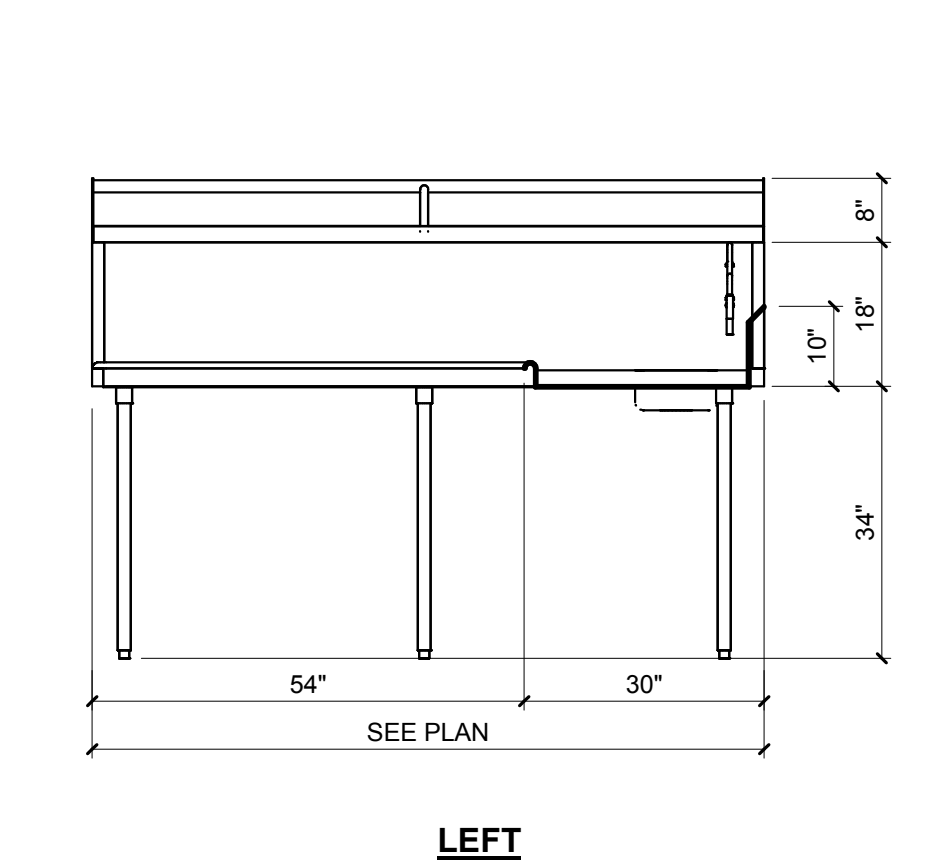
SAMPLE SET  
DO NOT DISTRIBUTE



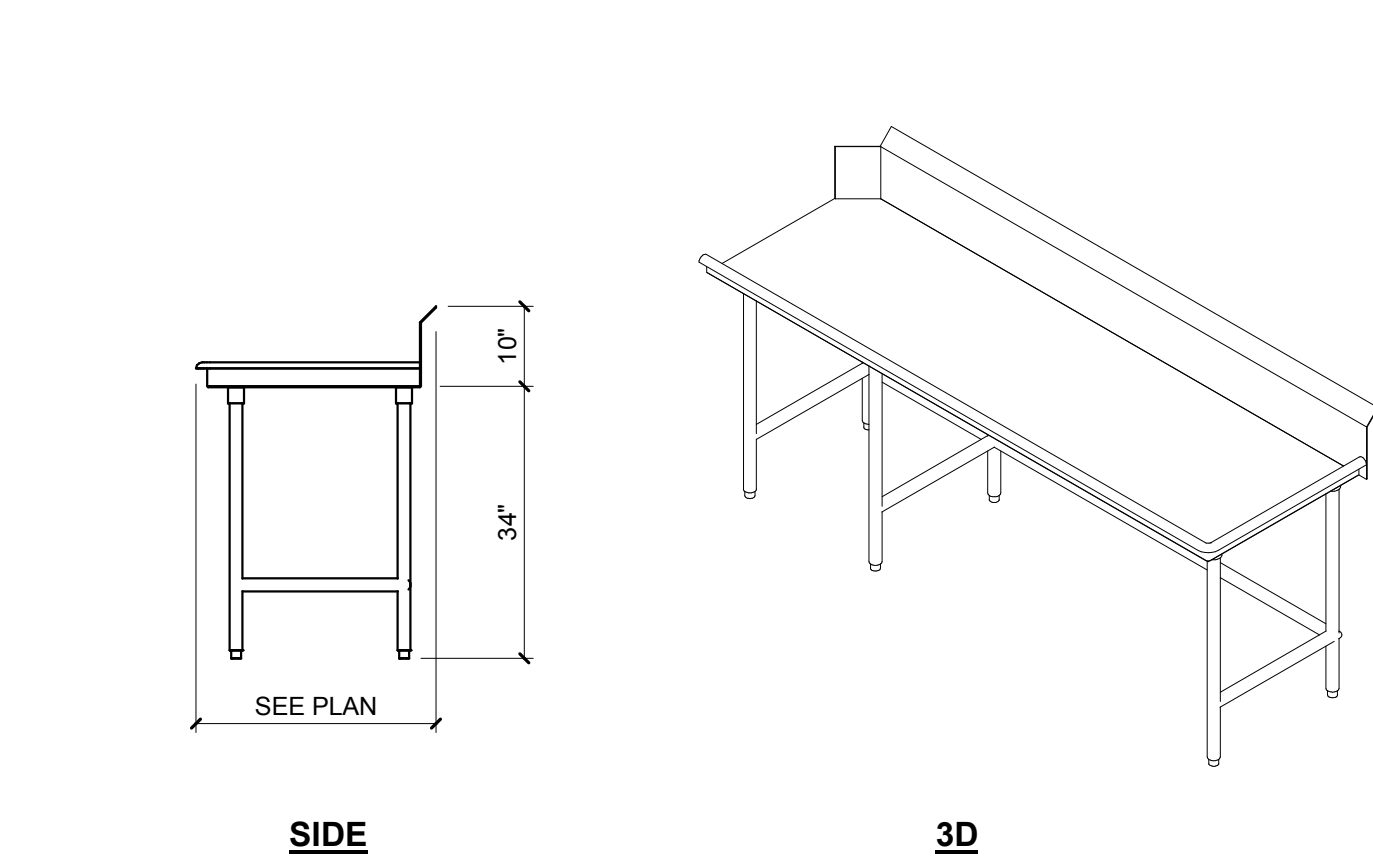
**7** K47  
SCALE: 1/2" = 1'-0"



**8** K74  
SCALE: 1/2" = 1'-0"



**9** K68  
SCALE: 1/2" = 1'-0"



REVISIONS	
▲	
▲	
▲	
▲	

PROJECT STATUS:  
DATE ISSUED:  
DRAWN BY:  
CHECKED BY:  
PROJECT#:

**EQUIP ELEVATIONS**

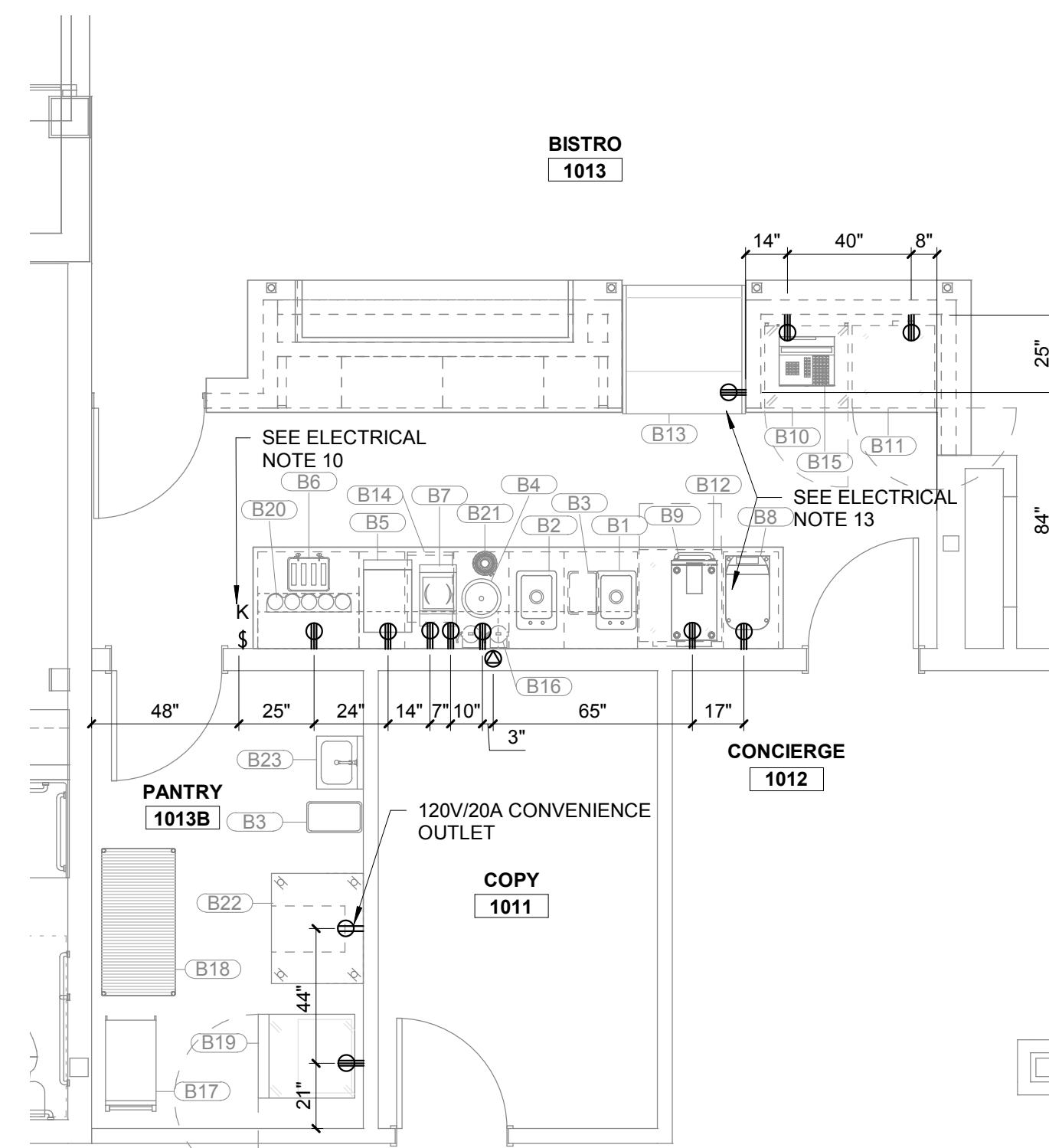
SAMPLE SET



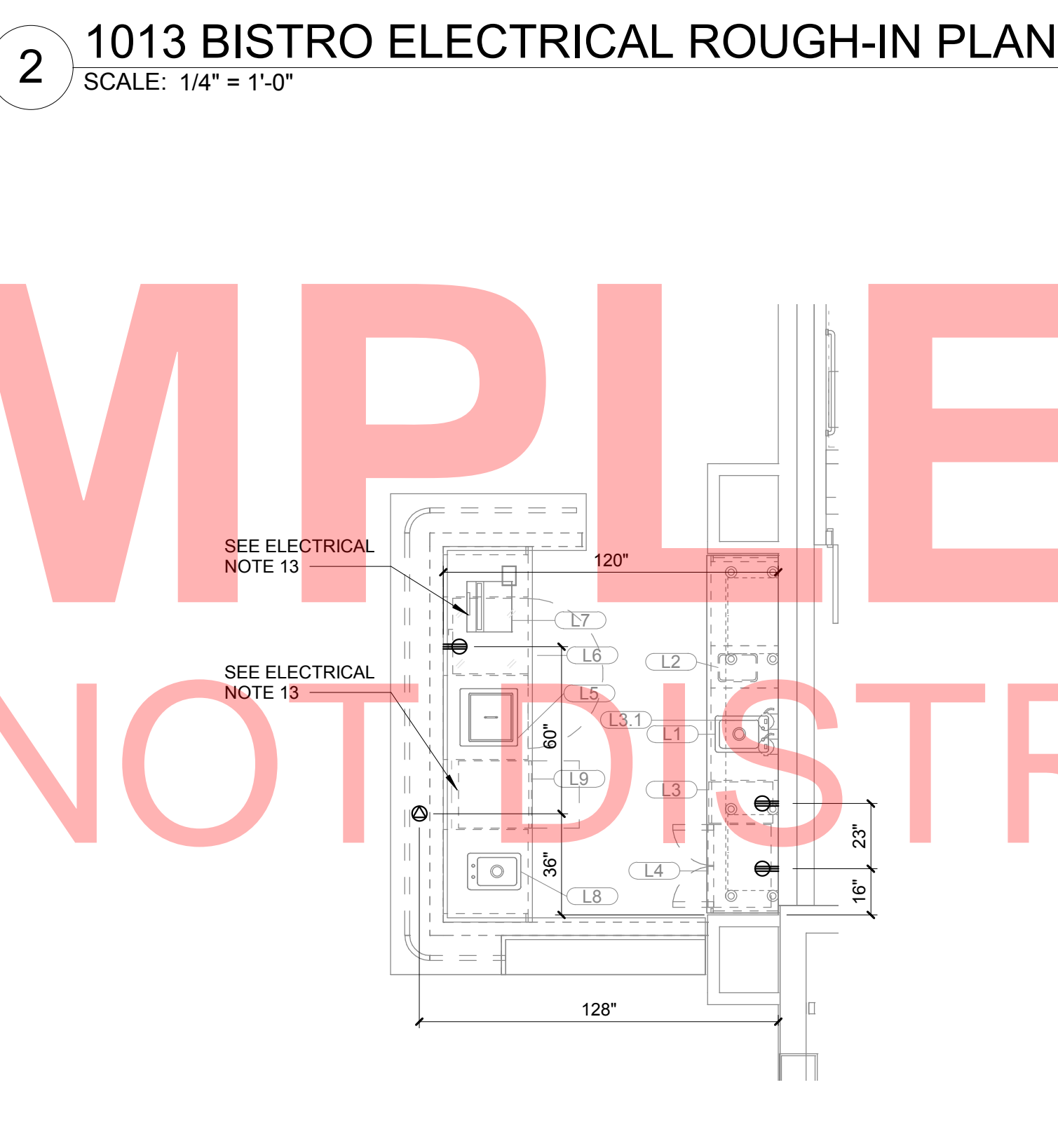




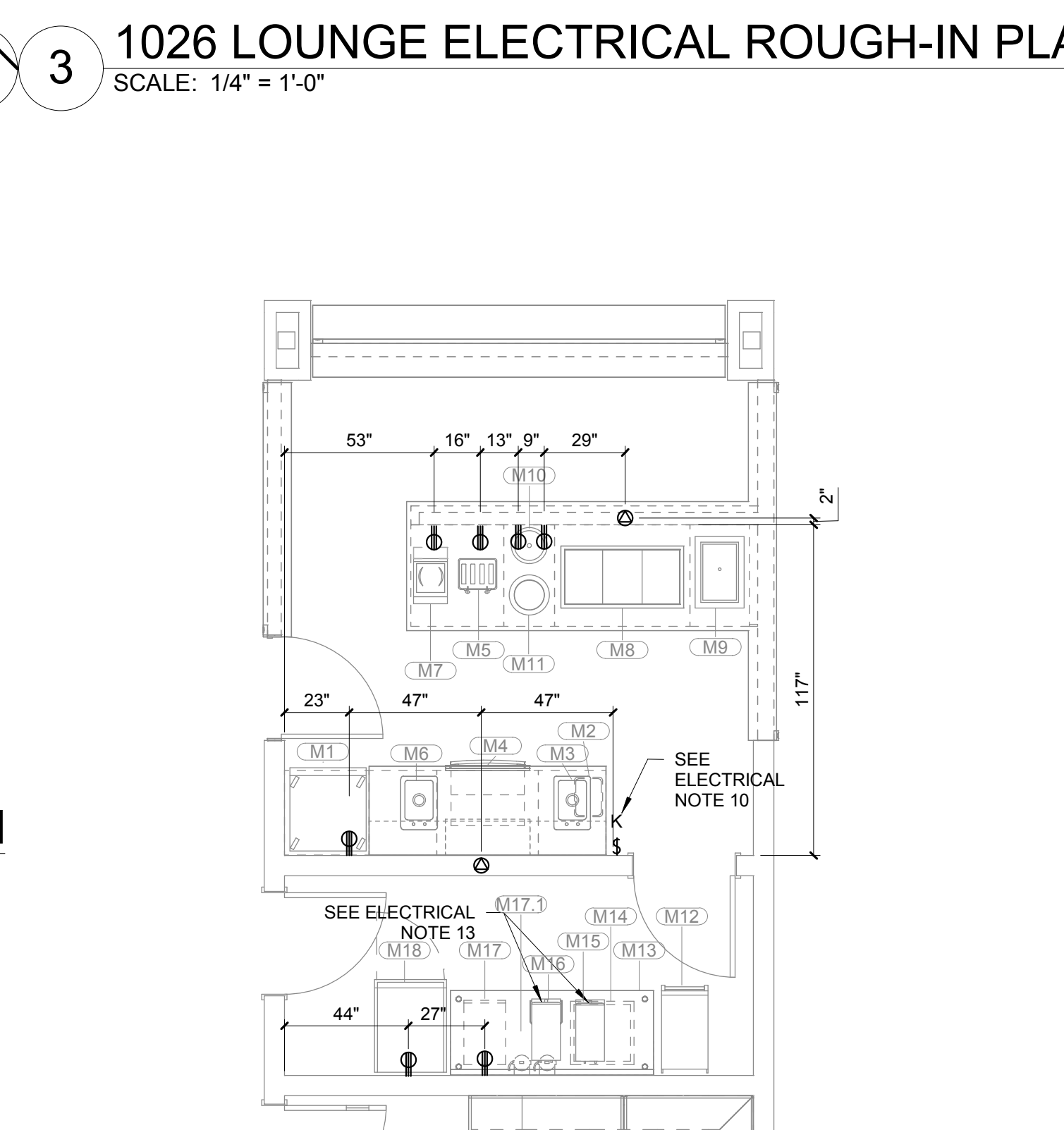
**1** 1033 KITCHEN/1032 EXHIBITION KITCHEN ELECTRICAL ROUGH-IN PLAN  
SCALE: 1/4" = 1'-0"



**2** 1013 BISTRO ELECTRICAL ROUGH-IN PLAN  
SCALE: 1/4" = 1'-0"



**3** 1026 LOUNGE ELECTRICAL ROUGH-IN PLAN  
SCALE: 1/4" = 1'-0"



**4** 1097 COUNTRY KITCHEN ELECTRICAL ROUGH-IN PLAN  
SCALE: 1/4" = 1'-0"

FOODSERVICE SYMBOLS AND ABBREVIATIONS		
SYM	ABB	DEFINITION
	AFF	ABOVE FINISH FLOOR
	ACH	ABOVE COUNTER HEIGHT
	FSEC	FOODSERVICE EQUIPMENT CONTRACTOR
	EC	ELECTRICAL CONTRACTOR
	PC	PLUMBING CONTRACTOR
		CONVENIENCE OUTLET
		DEDICATED OUTLET
		DIRECT ELECTRICAL CONNECTION (ROUGH-IN LOCATION)
		KEY OPERATED SWITCH
		EXHAUST FAN DIAL SWITCH
		CEILING MOUNTED ELECTRICAL OUTLET
		WEATHER-RESISTANT CONTROL SWITCH
		FIRE ALARM MANUAL PULL STATION
	HWCW	HOT/COLD WATER CONNECTION
	DW	DIRECT WASTE
	HD	HUB DRAIN
	FS	FLOOR SINK (8"X8"X6" DEEP)
	G	GAS CONNECTION
	FD	FLOOR DRAIN
	SS	STAINLESS STEEL
	WB	WALL BLOCKING

**GENERAL ELECTRICAL NOTES:**

- REFER TO MEP SCHEDULE FOR HEIGHT OF ROUGH-IN LOCATIONS.
- REFER TO MANUFACTURER'S EQUIPMENT CUTSHEETS.
- REFER TO FOODSERVICE ELEVATIONS AND SECTIONS FOR LOCATION OF SPECIALTY LIGHTING IN FRONT OF HOUSE FOODSERVICE AREAS. SPECIALTY LIGHTING INCLUDES PENDANTS, UNDERCABINET LIGHTING, CABINET INTERIOR LIGHTING (PUCK LIGHTING) AND LIGHTING BEHIND CROWN MOULDING (UP-LIGHTING) AS CALLED OUT.
  - FIXTURE COLOR FOR UNDERCABINET, PUCK LIGHTING AND UPLIGHTING SHALL MATCH THE COLOR OF THE CABINET SURFACE WHERE IT WILL BE MOUNTED. COLOR TEMPERATURE TO COORDINATE WITH OTHER LIGHTING IN THE SPACE.
  - PENDANTS ARE SHOWN FOR REFERENCE PURPOSES ONLY. REFER TO INTERIOR DESIGN AND ELECTRICAL DRAWINGS FOR ALL CEILING FIXTURES.
- ELECTRICAL AND GROUNDING CONNECTIONS MUST COMPLY WITH THE APPLICABLE PORTIONS OF THE NATIONAL ELECTRICAL CODE AND/OR OTHER LOCAL ELECTRICAL CODES.
- UNLESS OTHERWISE NOTED, ELECTRICAL CONTRACTOR TO PROVIDE AND INSTALL DUPLEX CONVENIENCE RECEPTACLES, TO BE MOUNTED AT 50" AFF TO CENTER OF BOX IN BACK OF HOUSE LOCATIONS AS SHOWN ON ELECTRICAL PLAN. MOUNT DUPLEX CONVENIENCE RECEPTACLES AT 46" AFF TO CENTER OF BOX FOR FRONT OF HOUSE LOCATIONS AS SHOWN ON ELECTRICAL PLAN.
- ELECTRICAL CONTRACTOR TO INSTALL AND CONNECT 4" LIGHT FIXTURES SUPPLIED WITH WALK-IN BY FSEC.
- NOT USED.
- FOODSERVICE EQUIPMENT CONTRACTOR (FSEC) SHALL COORDINATE ROUGH-IN REQUIREMENTS WITH EC. ALL ROUGH-IN LOCATIONS SHALL BE FIELD VERIFIED BY FSEC PRIOR TO DRYWALL INSTALLATION TO ASSURE CORRECT PLACEMENTS.
- HEIGHTS LISTED ON MEP SCHEDULE ARE TO THE CENTER LINE OF THE ROUGH-IN ABOVE FINISH FLOOR.
- ELECTRICAL CONTRACTOR TO PROVIDE ELECTRICAL KEYS TO LOCK-OUT SWITCH AS INDICATED ON PLAN FOR ALL EQUIPMENT EXCEPT REFRIGERATION, ICE AND BEVERAGE MACHINES. KEY TO BE REMOVABLE IN OFF POSITION ONLY.
- NOT USED.
- ELECTRICAL CONTRACTOR TO CONNECT DRAIN WATER TEMPERING KIT TO DISHWASHER WHEN FIELD MOUNTING IS REQUIRED.
- GC TO VERIFY ELECTRICAL REQUIREMENTS FOR OWNER SUPPLIED EQUIPMENT WITH OWNER/OPERATOR.
- ALL CONDUIT TO BE CONCEALED IN WALLS UNTIL POINT OF CONNECTION.
- ELECTRICAL CONTRACTOR TO PROVIDE WEATHER-RESISTANT SWITCHES TO CONTROL ROOFTOP FAN AND LIGHTS, IF APPLICABLE. FOR CONDENSATE HOOD MOUNTED AT 42" - 48" AFF OR IN ACCORDANCE WITH LOCAL CODES.
- ELECTRICAL CONTRACTOR TO ROUGH-IN STANDARD OCTAGON BOX WITH CONDUIT RACEWAY FOR MANUAL FIRE PULL STATION. STUB OUT ABOVE CEILING. REFER TO FS500 SERIES ANSUL PULL STATION DETAIL.
- ELECTRICAL CONTRACTOR TO ROUGH-IN DOUBLE GANG BOX FOR EXHAUST HOOD ROOFTOP FAN CONTROLS WITH CONDUIT RACEWAY BETWEEN CONTROLS AND ELECTRICAL BOX. CATS CABLE SHIPS WITH HOOD AND ACCESSORIES. REFER TO FS500 SERIES FOR DETAILS. HOOD CONTROLS SHALL BE MOUNTED AT A HEIGHT OF 42" - 48" AFF OR IN ACCORDANCE WITH LOCAL CODES.
  - HOOD LIGHT BULBS NOT INCLUDED WITH HOOD PACKAGE BY OTHER.
- EXHAUST HOOD REMOTE FIRE SUPPRESSION AND ELECTRICAL CABINETS TO BE INSTALLED AT CEILING HEIGHT IN MAIN KITCHEN. REFER TO ELEVATIONS FOR LOCATION IN FRONT OF HOUSE AREAS, IF APPLICABLE.

NOTE: FOR HOODS AND WALK-INS REFER TO BUILDING WORKS DRAWINGS; FS500 SERIES

SAMPLE SET

REVISIONS


PROJECT STATUS:  
DATE ISSUED:  
DRAWN BY:  
CHECKED BY:  
PROJECT#:

ELECTRICAL PLAN

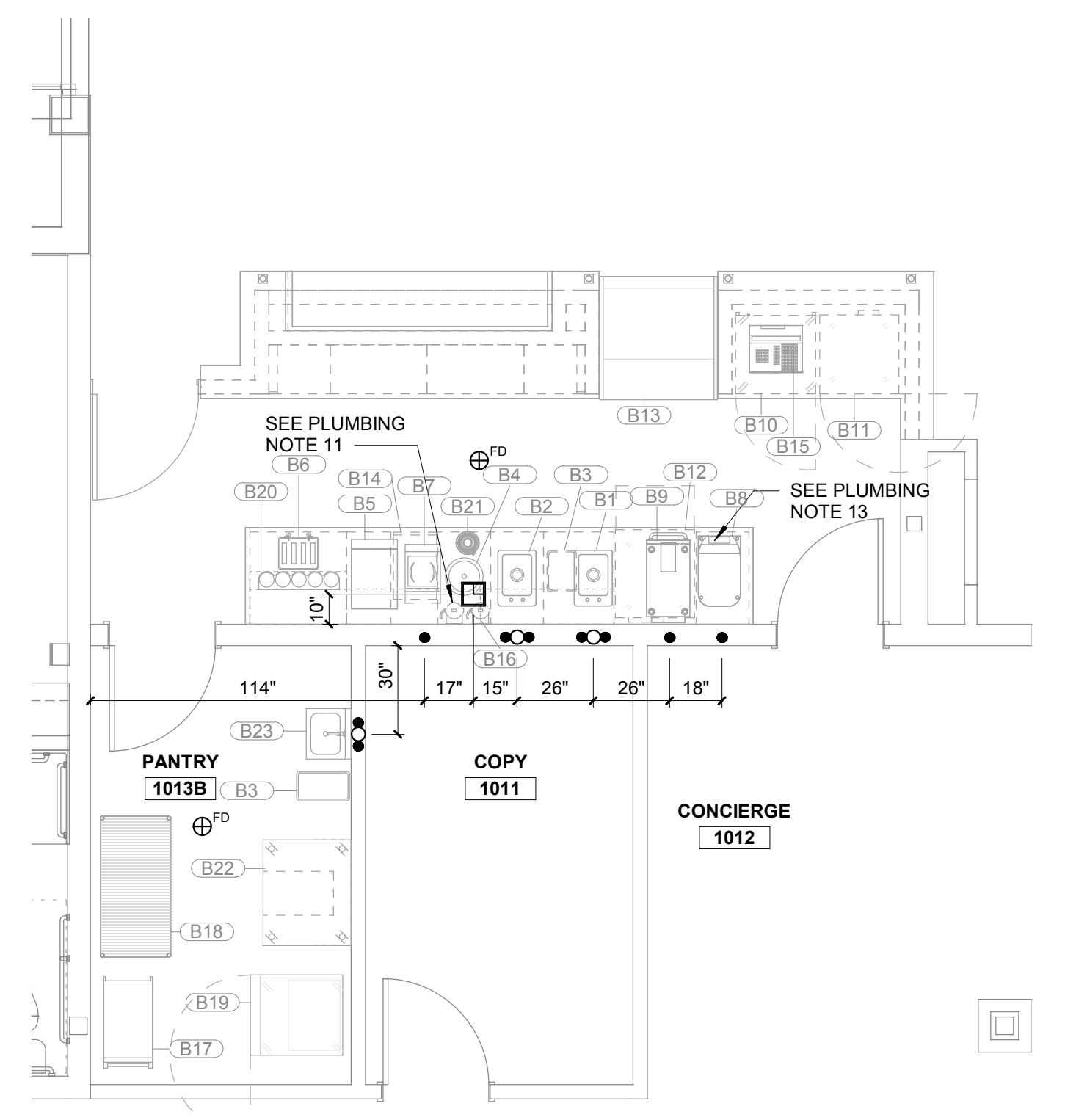
FOODSERVICE SYMBOLS AND ABBREVIATIONS		
SYM	ABB	DEFINITION
	AF	ABOVE FINISH FLOOR
	ACH	ABOVE COUNTER HEIGHT
	FSEC	FOODSERVICE EQUIPMENT CONTRACTOR
	EC	ELECTRICAL CONTRACTOR
	PC	PLUMBING CONTRACTOR
	CO	CONVENIENCE OUTLET
	EO	DEDICATED OUTLET
	DC	DIRECT ELECTRICAL CONNECTION (ROUGH-IN LOCATION)
	K	KEY OPERATED SWITCH
	E	EXHAUST FAN DIAL SWITCH
	C	CEILING MOUNTED ELECTRICAL OUTLET
	WP	WEATHER-RESISTANT CONTROL SWITCH
	F	FIRE ALARM MANUAL PULL STATION
	HW/CW	HOT/COLD WATER CONNECTION
	DW	DIRECT WASTE
	HD	HUB DRAIN
	FS	FLOOR SINK (8"X8"X8" DEEP)
	G	GAS CONNECTION
	FD	FLOOR DRAIN
	SS	STAINLESS STEEL
	WB	WALL BLOCKING

**GENERAL PLUMBING NOTES:**

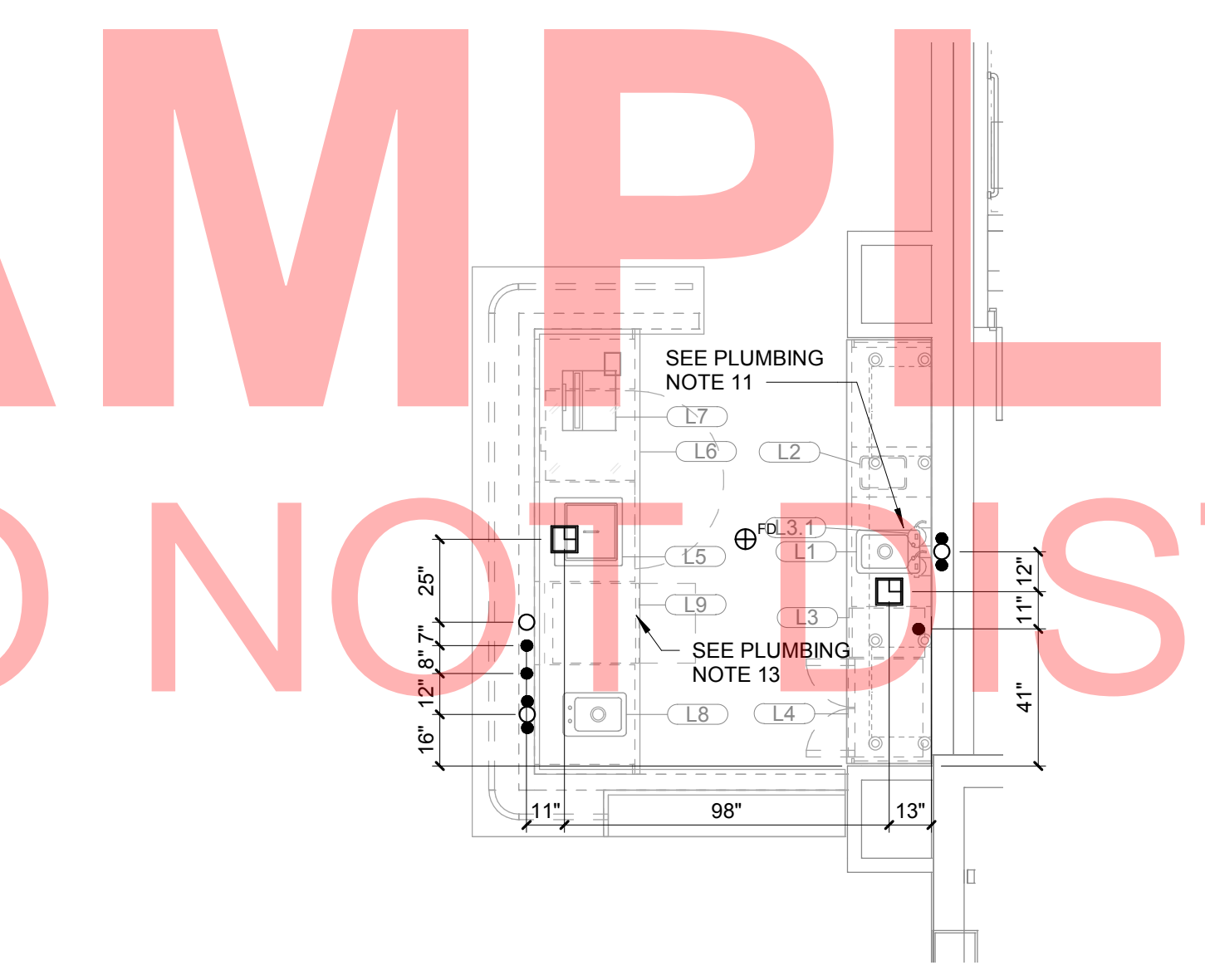
- REFER TO MEP SCHEDULE FOR HEIGHT OF ROUGH-IN LOCATIONS.
- PLUMBING CONNECTIONS MUST COMPLY WITH APPLICABLE SANITARY, SAFETY AND PLUMBING CODES.
- DIMENSIONED LOCATIONS LISTED ON ROUGH-IN SCHEDULE ARE TO THE CENTER LINE OF THE ROUGH-IN.
- FSEC SHALL COORDINATE ALL ROUGH-INS WITH APPROPRIATE TRADE TO ENSURE ALL ROUGH-IN LOCATIONS ARE CONCEALED IN THE WALLS AND TUBBED OUT IN THE LOCATIONS SHOWN ON THE DRAWINGS.
- FOR ALL INDIRECT DRAIN LOCATIONS, PLUMBING CONTRACTOR (PC) TO EXTEND WASTE PIPING FROM DRAIN TO A POINT OVER FLOOR SINK.
- 8"X8"X8" FLOOR SINKS TO HAVE 3/4 GRATE FLUSH TO FLOOR. SEE PLAN FOR LOCATIONS. PC TO PROVIDE FLOOR SINKS.
- MEP CONSULTANT TO LOCATE AND SIZE GREASE INTERCEPTOR. PC TO PROVIDE AND INSTALL GREASE INTERCEPTOR. COMPLY WITH LOCAL PLUMBING AND SANITARY CODES.
- AT ALL VACUUM BREAKER LOCATIONS PC TO PROVIDE CODE COMPLIANT BACKFLOW DEVICE AS NEEDED. MEP CONSULTANT TO DETERMINE NECESSITY PER LOCAL CODES.
- PIPES MUST BE HELD RIGID UNDER SINK BY CONNECTION FITTINGS, BRACE, ETC.
- CAST IRON PIPE IS RECOMMENDED AT ALL DISH/MACHINE, HOTWELL AND COMBI OVEN/STEAMER DRAIN LOCATIONS.
- WHEN WATER TREATMENT SYSTEMS ARE USED, THE CHLORINE FILTER SHOULD BE LOCATED CLOSEST TO THE WATER SOURCE, FOLLOWED BY THE SCALE REMOVAL FILTER. FOR INSTALLATIONS UNDERCOUNTER OR INSIDE CABINETS, ALLOW 2" MINIMUM CLEARANCE BENEATH EQUIPMENT.
- PC TO INSTALL DRAIN WATER TEMPERING KITS ON DISH MACHINES.
- GC TO VERIFY PLUMBING REQUIREMENTS FOR OWNER SUPPLIED EQUIPMENT WITH OWNER/OPERATOR.



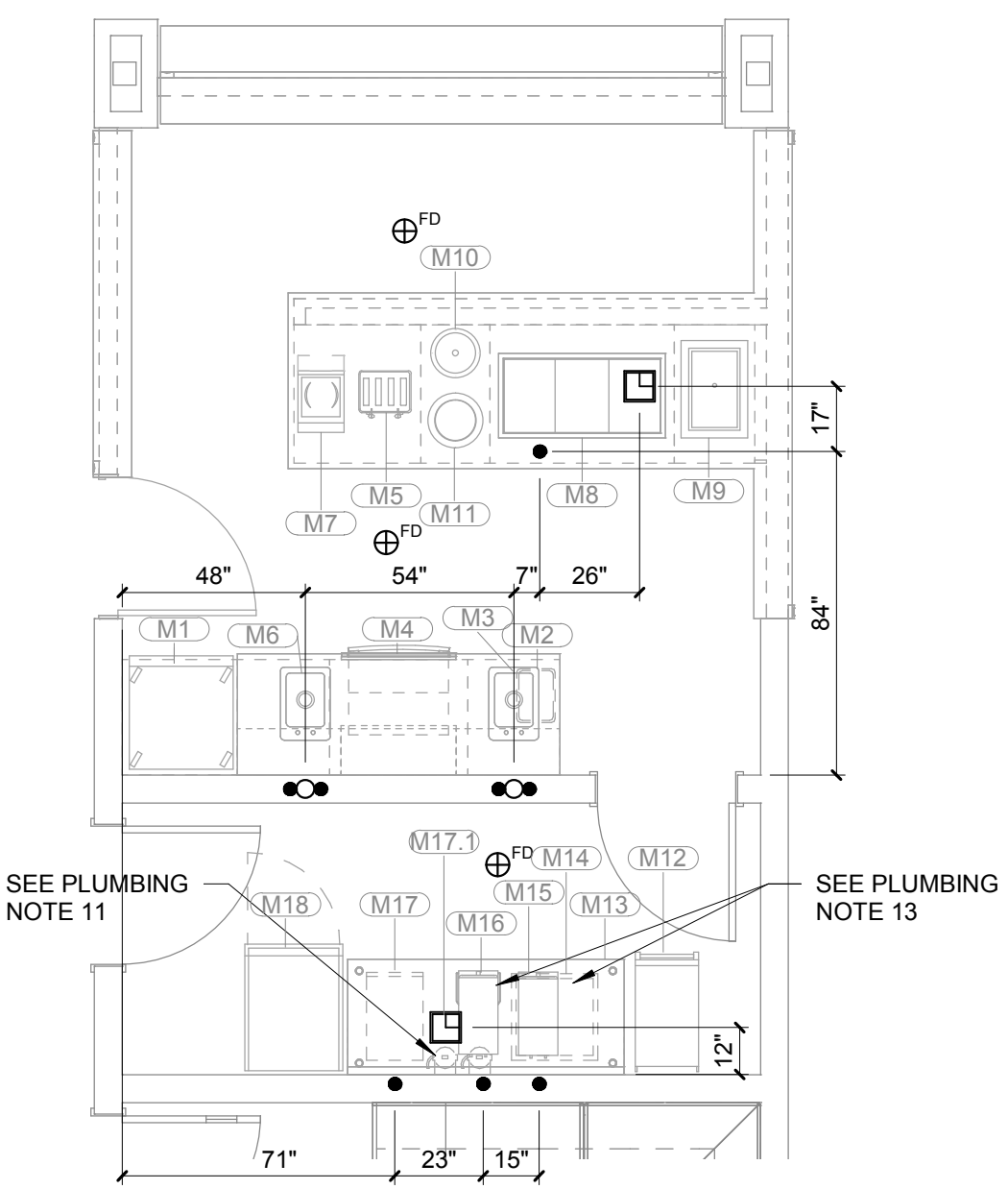
**1 1033 KITCHEN/1032 EXHIBITION KITCHEN PLUMBING ROUGH-IN PLAN**  
SCALE: 1/4" = 1'-0"



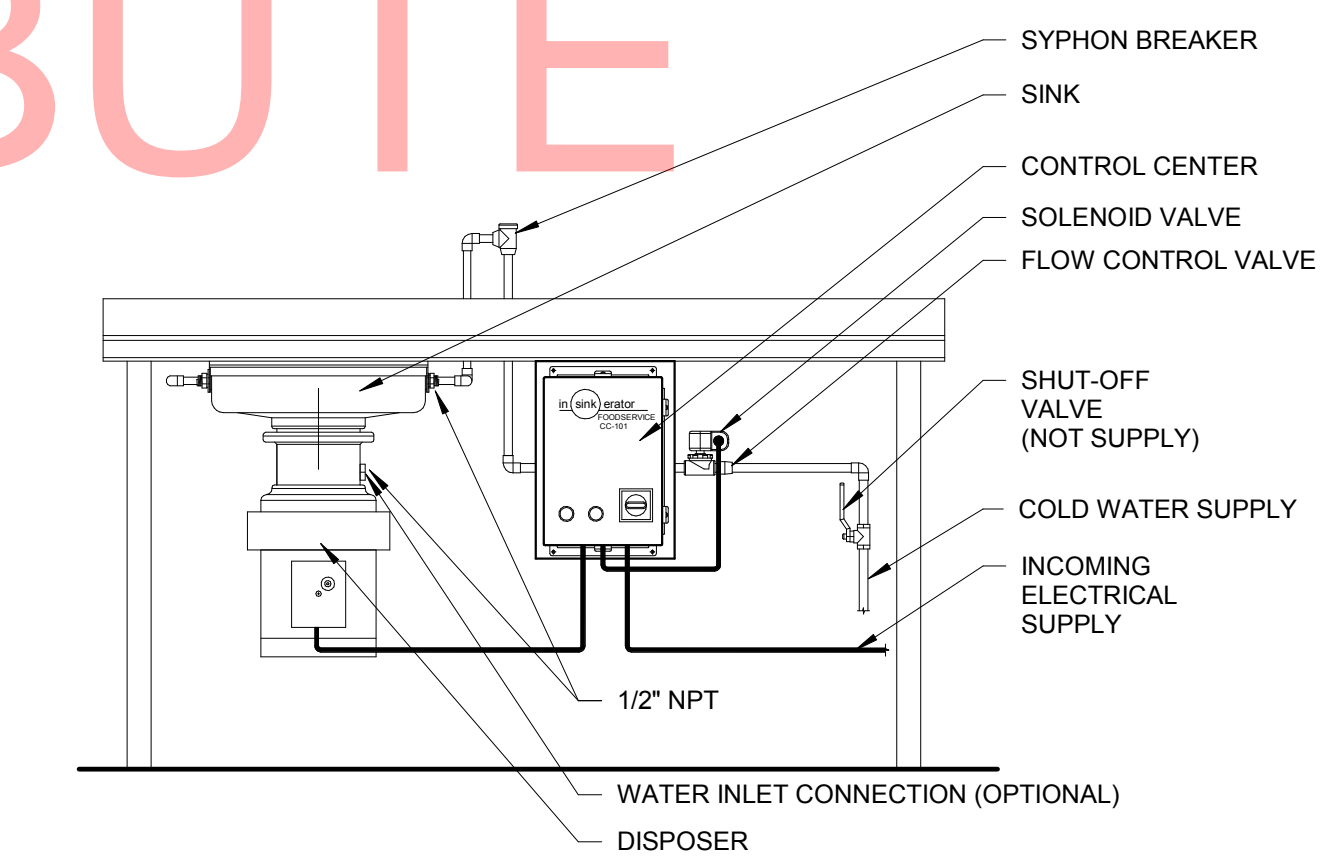
**2 1013 BISTRO PLUMBING ROUGH-IN PLAN**  
SCALE: 1/4" = 1'-0"



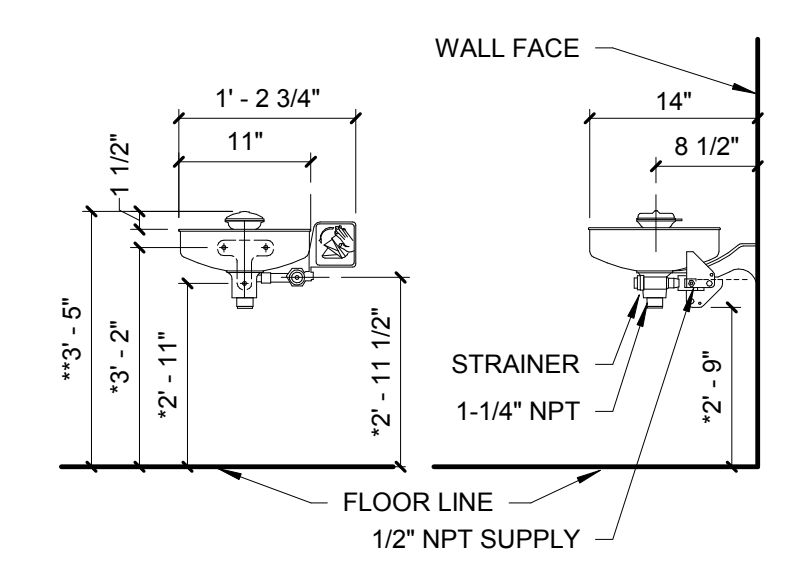
**3 1026 LOUNGE PLUMBING ROUGH-IN PLAN**  
SCALE: 1/4" = 1'-0"



**4 1097 COUNTRY KITCHEN PLUMBING ROUGH-IN PLAN**  
SCALE: 1/4" = 1'-0"



**5 MAIN KITCHEN GARBAGE DISPOSER INSTALLATION, TYP.**  
SCALE: 3/4" = 1'-0"



- NOTES:  
1. ANSI STANDARD Z358.1 SPECIFIES EYEWASH NOZZLES TO BE 33" [838mm] TO 45" [1143mm] ABOVE THE FLOOR  
2. THESE DIMENSIONS ARE FOR REFERENCE

**6 MAIN KITCHEN EYE WASH STATION, TYP.**  
SCALE: 3/4" = 1'-0"

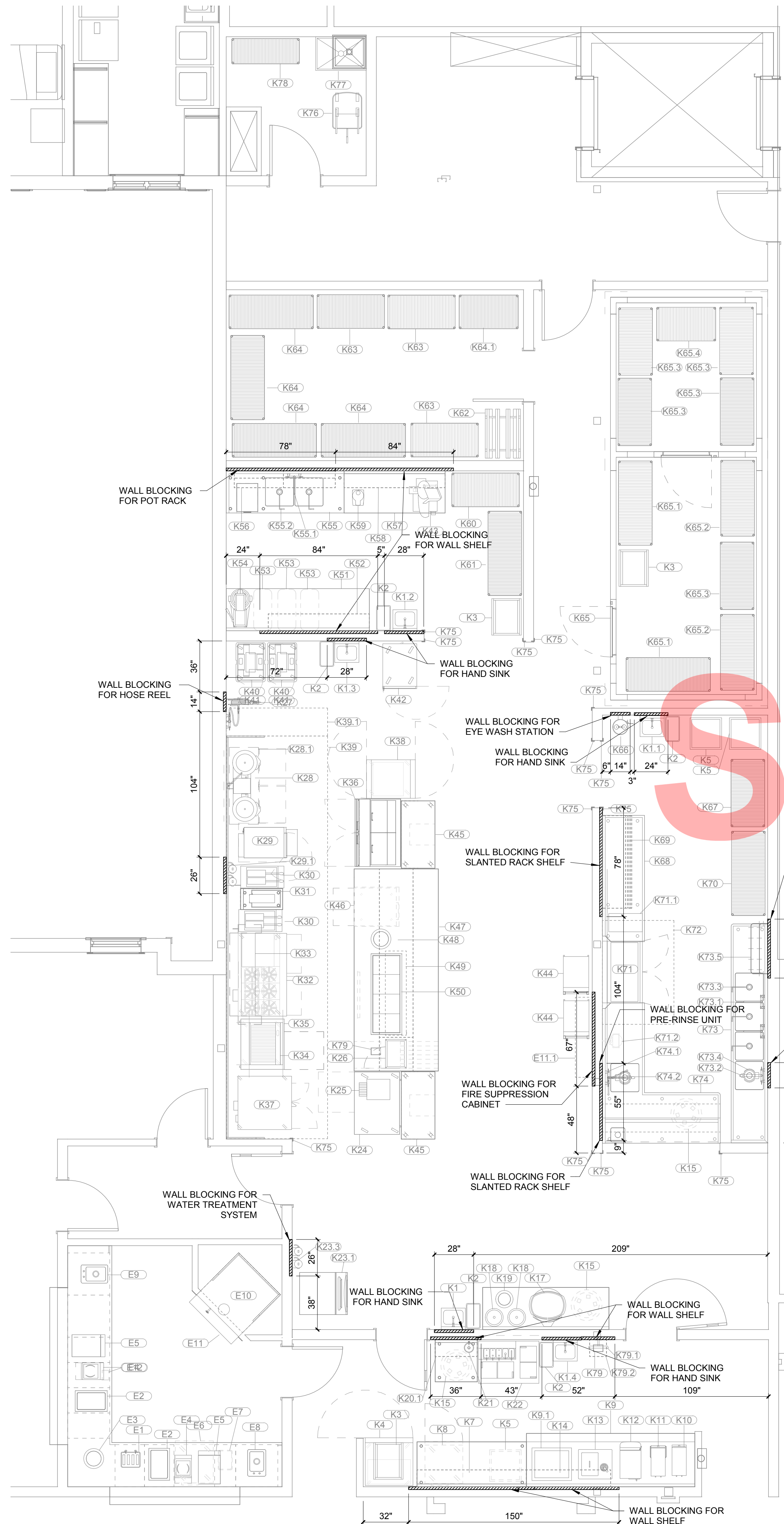
SAMPLE SET  
DO NOT DISTRIBUTE

SAMPLE SET

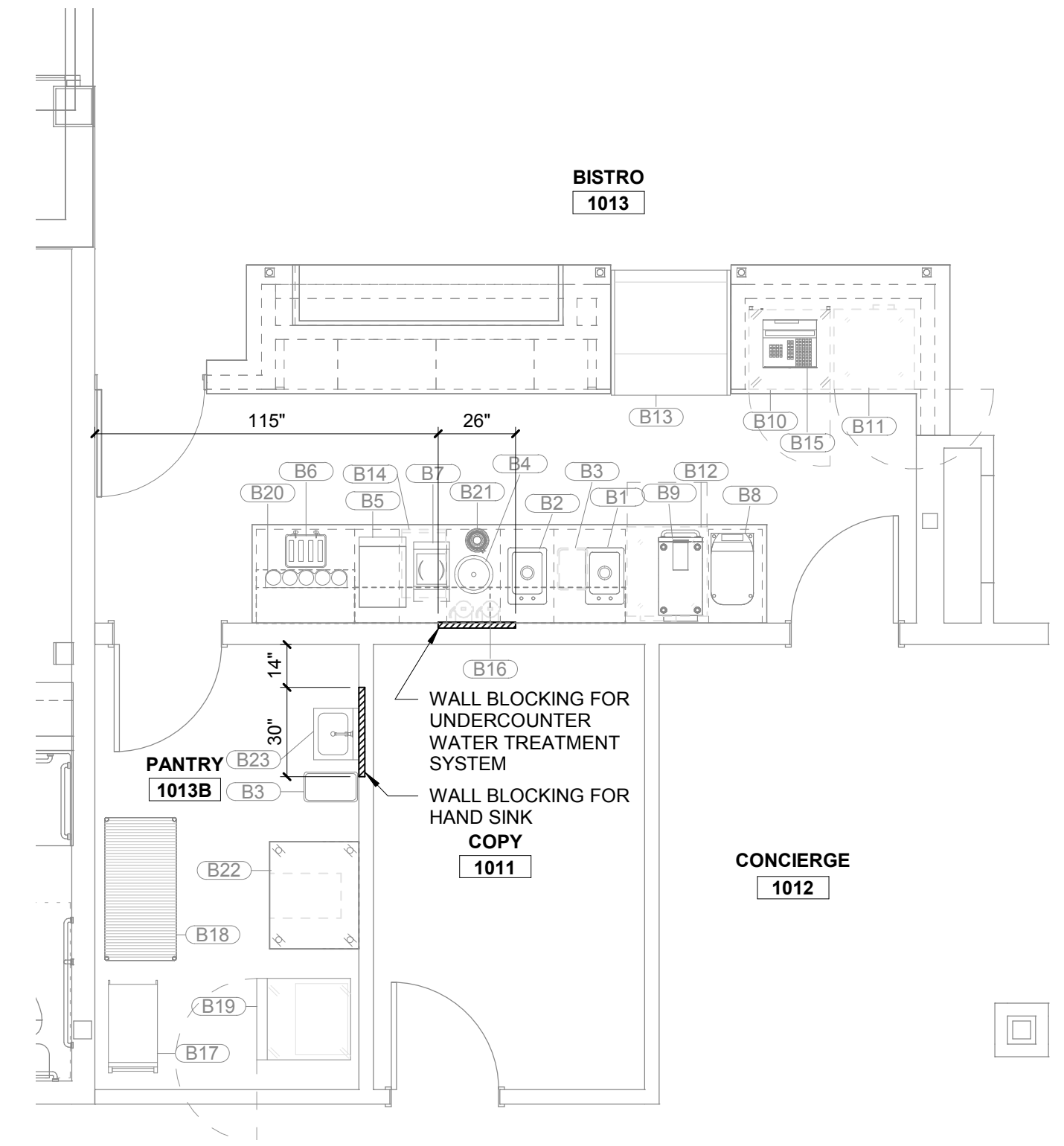
REVISIONS


PROJECT STATUS:  
DATE ISSUED:  
DRAWN BY:  
CHECKED BY:  
PROJECT#

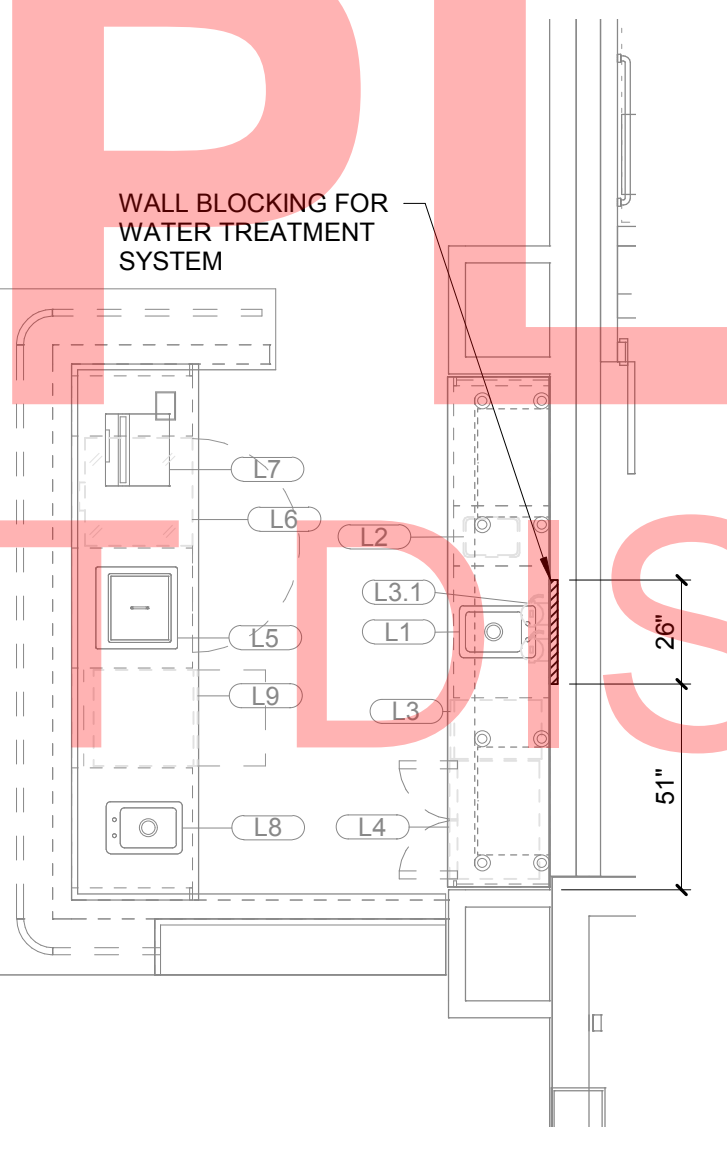
PLUMBING PLAN



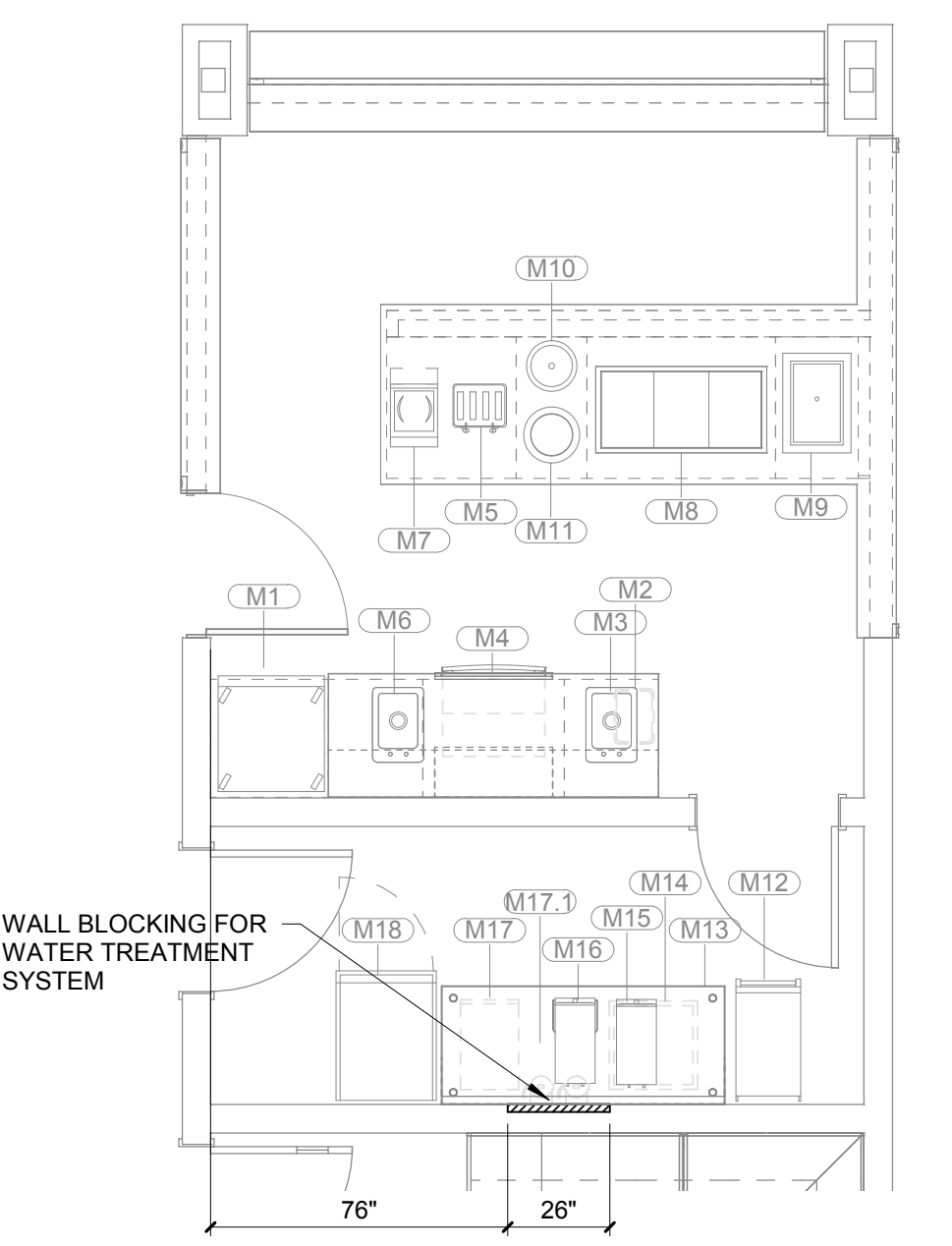
**1 1033 KITCHEN/1032 EXHIBITION KITCHEN BUILDING WORKS PLAN**  
SCALE: 1/4" = 1'-0"



**2 1013 BISTRO BUILDING WORKS PLAN**  
SCALE: 1/4" = 1'-0"



**3 1026 LOUNGE BUILDING WORKS PLAN**  
SCALE: 1/4" = 1'-0"



**4 1097 COUNTRY KITCHEN BUILDING WORKS PLAN**  
SCALE: 1/4" = 1'-0"

- GENERAL BUILDING WORKS NOTES:**
- ALL WALLS WITHIN 1'-6" OF TYPE I HOODS TO BE NON-COMBUSTIBLE.
  - CONDENSERS FOR WALK-IN COOLERS AND FREEZERS TO BE LOCATED ON BUILDING ROOF, DIRECTLY ABOVE WALK-INS, OR ON EXTERIOR PAD, PREFERABLY WITHIN 50'-0" OF WALK-INS. VERIFY EXACT LOCATION WITH ARCHITECT, ROOF RAILS OR EXTERIOR PAD BY GENERAL CONTRACTOR.
  - FOR HOODS AND WALK-INS REFER TO BUILDING WORKS DRAWINGS, FS500 SERIES.

FOODSERVICE SYMBOLS AND ABBREVIATIONS		
SYM	ABB	DEFINITION
AF	AF	ABOVE FINISH FLOOR
ACH	ACH	ABOVE COUNTER HEIGHT
FSEC	FSEC	FOODSERVICE EQUIPMENT CONTRACTOR
EC	EC	ELECTRICAL CONTRACTOR
PC	PC	PLUMBING CONTRACTOR
CO	CO	CONVENIENCE OUTLET
DO	DO	DEDICATED OUTLET
DE	DE	DIRECT ELECTRICAL CONNECTION (ROUGH-IN LOCATION)
K	K	KEY OPERATED SWITCH
F	F	EXHAUST FAN DIAL SWITCH
C	C	CEILING MOUNTED ELECTRICAL OUTLET
WP	WP	WEATHER-RESISTANT CONTROL SWITCH
F	F	FIRE ALARM MANUAL PULL STATION
HCW	HCW	HOT/COLD WATER CONNECTION
DW	DW	DIRECT WASTE
HD	HD	HUB DRAIN
FS	FS	FLOOR SINK (8"X8"X8" DEEP)
G	G	GAS CONNECTION
FD	FD	FLOOR DRAIN
SS	SS	STAINLESS STEEL
WB	WB	WALL BLOCKING

WALL BLOCKING SCHEDULE		
CONFIRM ALL WALL BLOCKING HEIGHTS WITH EQUIPMENT CUT SHEETS AND FIELD CONDITIONS		
BLOCKING HEIGHT AFF	EQUIPMENT TYPE	CONDITIONS
54" - 72"	PRE-RINSE FAUCET	
24" - 50"	HAND SINK	
24" - 50"	EYE WASH STATION	
12" - 36"	WATER TREATMENT SYSTEM, UNDERCOUNTER	
36" - 72"	WATER TREATMENT SYSTEM	
42" - 90"	POT RACK	
42" - 72"	SLANTED DISH RACK	
42" - 60"	WALL SHELF	
48" - 66"	SOILED SORTING SHELF	
42" - 80"	DOUBLE WALL SHELF	
72" - FINISHED CEILING	FIRE SUPPRESSION CABINET - BACK OF HOUSE	
6" - 34"	FIRE SUPPRESSION CABINET - FRONT OF HOUSE	

**SAMPLE SET**  
**DO NOT DISTRIBUTE**

**SAMPLE SET**

REVISIONS


PROJECT STATUS:  
DATE ISSUED:  
DRAWN BY:  
CHECKED BY:  
PROJECT#:

BUILDING WORKS PLAN