



# 2018 Social Impact Summary

## Community & Neighborhood Partnerships, Causes and Events

As a dedicated team that cares, our Direct Supply Community Involvement Team harnesses the energy of our company and our Champion Partners to provide service involvement and leadership opportunities to benefit our community.

### Health

- Elder Emphasis initiative (serving local senior communities and elder community organizations)
- Youth-in-need health and hunger initiatives
- “Direct Supply Partner-Passionate” health organizations and issues
- Health-focused programs and organizations that benefit Direct Supply Partners, their families and our community

### Education

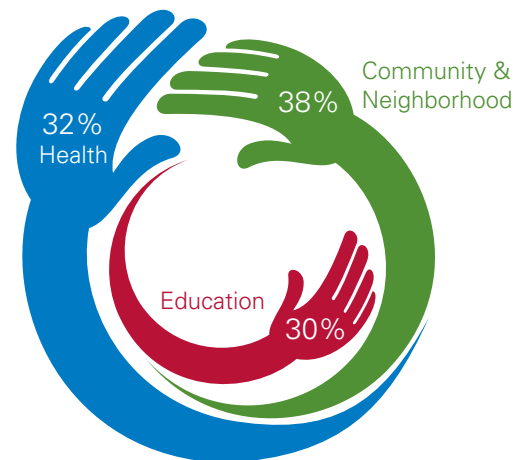
- Future Leaders initiative (serving STEM initiatives and area youth-in-need)
- “Direct Supply Partner-Passionate” educational organizations and issues
- Education-focused programs and organizations that benefit Direct Supply Partners, their families and our community

### Community & Neighborhood

- Community Caring initiative
- Neighborhood support (includes non-education-related support for youth-in-need)
- “Direct Supply Partner-Passionate” community support of charitable organizations and community issues

## Volunteer Impact

**49% of our Champion Partners volunteered in 2018!**





# 2018 Direct Supply Community Partners

## Health

- Alzheimer's Association
- American Lung Association
- AIDS Resource Center of Wisconsin
- BloodCenter of Wisconsin
- Children's Hospital of Wisconsin
- Hunger Task Force
- Social Development Foundation
- The Gathering
- University of Wisconsin Alzheimer's Institute

## Education

- Boys & Girls Clubs of Greater Milwaukee
- Children's Outing Association
- Fresh Coast Classic
- Hispanic Professionals of Greater Milwaukee
- Junior Achievement
- Lead 2 Change
- Lighthouse Youth Center
- Milwaukee Public Museum
- Milwaukee Public Schools
- Operation Dream
- Skills USA
- STEM Forward
- Teens Grow Greens
- TEMPO Scholarship Fund
- The Better Project Awareness Foundation
- United Negro College Fund
- YMCA of Milwaukee and Waukesha County

## Community & Neighborhood

- Ageless Aviation Dreams Foundation
- Camp Hometown Heroes
- Community Advocates
- Concord Chamber Orchestra
- Havenwoods Economic Development Corporation
- Eisenhower Center
- Milwaukee Film Black Lens Series
- Milwaukee PBS
- Milwaukee Police Department District 4
- Milwaukee World Festival
- Revitalize Milwaukee
- Safe and Sound
- Silver Spring Neighborhood Center
- The New 9th
- WMSE 91.7
- Wisconsin Women's Business Initiative Corporation
- Unison (formerly Interfaith and SET Ministries)
- United Performing Arts Fund
- USO Milwaukee

## Direct Supply Partner-Passionate Organizations

- American Diabetes Association
- American Foundation of Suicide Prevention
- Audio & Braille Literacy Enhancement
- Autism Society
- Centro Legal
- Chasing Chad
- CJ Lomas Recovery Foundation
- Community Projects for Seniors
- Gathering on the Green
- Hope Street Ministries
- Junior Womens Club of Mequon-Thiensville
- Juvenile Diabetes Research Foundation
- Leukemia and Lymphoma Society
- Lindengrove Foundation
- Looking for a Few
- Make-A-Wish Foundation of Wisconsin
- Movember
- National Alliance on Mental Illness
- National Center for Women and Information Technology
- National MS Society
- Scholastic Fund for Students of Hispanic Descent
- Underdog Pet Rescue
- UWM Alumni Association
- Wisconsin Equal Justice Fund
- Wisconsin Humane Society

For more information, please contact  
**CommunityInvolvement@directs.com**

or visit our YouTube video:

[https://www.youtube.com/watch?v=ncZEhf3r6CU&feature=em-subst\\_digest](https://www.youtube.com/watch?v=ncZEhf3r6CU&feature=em-subst_digest)

